



**Kleef- & Weldable tubes/
Tubes à coller & à souder**
TUBES



SELF-LIGATING Tubes



Experience Self-ligating tubes

MAXILLARY

Tooth 6 & 7	Torque	Angulation	Rotation	.018"		.022"	
				R	L	R	L
Experience SL tube, Roth	-10°	0°	14°D	20-1160-0010	20-1260-0010	20-2160-0010	20-2260-0010
Experience SL tube, Small Base Roth	-10°	0°	14°D	-	-	20-2160-S010	20-2260-S010
Experience SL tube, MBT	-14°	0°	10°D	20-1160-0020	20-1260-0020	20-2160-0020	20-2260-0020
Experience SL tube, Small Base MBT	-14°	0°	10°D	20-1160-S020	20-1260-S020	20-2160-S020	20-2260-S020
Experience double SL tube, Extra Torque	-20°	0°	20°D	20-1160-0030	20-1260-0030	20-2160-0030	20-2260-0030

MANDIBULAR

Tooth 6 & 7	Torque	Angulation	Rotation	.018"		.022"	
				R	L	R	L
Experience SL tube, Roth	-25°	0°	4°D	20-1460-0010	20-1360-0010	20-2460-0010	20-2360-0010
Experience SL tube, Small Base Roth	-25°	0°	4°D	-	-	20-2460-S010	20-2360-S010
Experience SL tube, MBT	-20°	0°	0°D	20-1460-0020	20-1360-0020	20-2460-0020	20-2360-0020
Experience SL tube, Small Base MBT	-20°	0°	0°D	20-1460-S020	20-1360-S020	20-2460-S020	20-2360-S020
Experience SL tube, Extra Torque	-14°	0°	4°D	-	-	20-2460-0032	20-2360-0032

MANDIBULAR

Tooth 6 & 7	Torque	Angulation	Rotation	.018"		.022"	
				R	L	R	L
Experience DOUBLE SL tube, Extra Torque	-10°	0°	4°D	20-1460-0030	20-1360-0030	20-2460-0030	20-2360-0030

De tubes zijn verpakt per 10 stuks/ Les tubes sont emballés par 10 pcs



LEGEND LP Tubes

Conventional tubes

Tooth	Torque	Angulation	Rotation	.018"		.022"	
				R	L	R	L
U6 , Roth	-14°	0°	14°	40-1160-0114	40-1260-0114	40-2160-0114	40-2260-0114
U7, Roth	-14°	0°	14°	40-1170-0114	40-1270-0114	40-2170-0114	40-2270-0114
L6, Roth	-25°	0°	4°	40-1460-0114	40-1360-0114	40-2460-0114	40-2360-0114
L7, Roth	-25°	0°	6°	40-1470-0114	40-1370-0114	40-2470-0114	40-2370-0114
U6 , MBT	-14°	0°	10°	40-1160-0106	40-1260-0106	40-2160-0106	40-2260-0106
U6 , MBT	-14°	0°	0°	40-1160-0107	40-1260-0107	40-2160-0107	40-2260-0107
U7, MBT	-14°	0°	10°	40-1170-0106	40-1270-0106	40-2170-0106	40-2270-0106
U7, MBT	-14°	0°	0°	40-1170-0107	40-1270-0107	40-2170-0107	40-2270-0107
L6, MBT	-20°	0°	0°	40-1460-0106	40-1360-0106	40-2460-0106	40-2360-0106
L7, MBT	-10°	0°	0°	40-1470-0106	40-1370-0106	40-2470-0106	40-2370-0106

De tubes zijn verpakt per 10 stuks/ Les tubes sont emballés par 10 pcs

Kleef- & Weldable TUBES à coller & à souder



LEGEND LE Tubes



LEGEND LE Tubes (Large Entrance)

Second Molar Bondable

Non-convertible single tubes for second molars, the funnel entry of these tubes facilitates access to second molars and its anatomical base fits the teeth perfectly making positioning easy.

MAXILLARY

Type Roth

Dimensions	Torque	Rotation	P/N	
			R	L
.018"x.025"	-14°	14°D	40-1170-0099	40-1270-0099
.022"x.028"	-14°	14°D	40-2170-0099	40-2270-0099

Type Andrews

Dimensions	Torque	Rotation	P/N	
			R	L
.018"x.025"	-9°	7°D	40-1170-0100	40-1270-0100
.022"x.028"	-9°	7°D	40-2170-0100	40-2270-0100

MANDIBULAR

Type Roth

Dimensions	Torque	Rotation	P/N	
			R	L
.018"x.025"	-30°	6°D	40-1470-0099	40-1370-0099
.022"x.028"	-30°	6°D	40-2470-0099	40-2370-0099

Type Andrews

Dimensions	Torque	Rotation	P/N	
			R	L
.018"x.025"	-25°	0°	40-1470-0100	40-1370-0100
.022"x.028"	-25°	0°	40-2470-0100	40-2370-0100

Type MBT*

Dimensions	Torque	Rotation	P/N	
			R	L
.018"x.025"	-10°	0°	40-1470-0101	40-1370-0101
.022"x.028"	-10°	0°	40-2470-0101	40-2370-0101

De tubes zijn verpakt per 10 stuks/ Les tubes sont emballés par 10 pcs



MINI Tubes



MINI ERUPTION TUBE

for 2nd Molar, low profile bondable

Dimensions	Torque	Rotation	Length mm	P/N	
				R	L
.018"x.025"	-10°	0°D	2.0	40-1170-0122	40-1270-0122
.022"x.028"	-10°	0°D	2.0	40-2170-0122	40-2270-0122
.018"x.025"	-25°	0°D	2.0	40-1470-0122	40-1370-0122
.022"x.028"	-25°	0°D	2.0	40-2470-0122	40-2370-0122

AXCESS Tubes



AXCESS Tubes

These entry point buccal tubes are manufactured in one-piece using MIM (Metal Injection Molded) technology. AXCESS tubes are available in bondable and weldable versions.

MAXILLARY

Double Non-Convertible HG .045" 1st Molar

Dimensions	Torque	Rotation	R/L	P/N	
				Weldable	Bondable
.018"x.025"	-10°	6°D	R	41-1160-0023	—
			L	41-1260-0023	—
.022"x.028"	-10°	6°D	R	41-2160-0023	—
			L	41-2260-0023	—
.018"x.025"	0°	6°D	R	41-1160-0024	—
			L	41-1260-0024	—
.022"x.028"	0°	6°D	R	41-2160-0024	—
			L	41-2260-0024	—

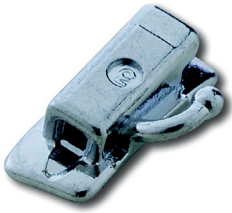
Single Non-Convertible 1st Molar

Dimensions	Torque	Rotation	R/L	P/N	
				Weldable	Bondable
.022"x.028"	-10°	6°D	R	41-2160-0025	40-2160-0025
			L	41-2260-0025	40-2260-0025
.018"x.025"	0°	6°D	R	41-1160-0026	40-1160-0026
			L	41-1260-0026	40-1260-0026
.022"x.028"	0°	6°D	R	—	40-2160-0026
			L	—	40-2260-0026

Single Non-Convertible 2nd Molar

Dimensions	Torque	Rotation	R/L	P/N	
				Weldable	Bondable
.018"x.025"	-10°	6°D	R	—	40-1170-0088
			L	—	40-1270-0088
.018"x.025"	0°	0°	R	—	40-1170-0090
			L	—	40-1270-0090
.018"x.025"	-10°	0°	R	—	40-1170-0091
			L	—	40-1270-0091

De tubes zijn verpakt per 10 stuks/ Les tubes sont emballés par 10 pcs



AXCESS Tubes



AXCESS Tubes

Single Non-Convertible 2nd Molar

Dimensions	Torque	Rotation	R/L	P/N	
				Weldable	Bondable
.022"x.028"	-10°	6°D	R	41-2170-0025	40-2170-0025
			L	41-2270-0025	40-2270-0025
.022"x.028"	-10°	6°D	R	—	40-2170-0088
			L	—	40-2270-0088
.022"x.028"	0°	0°	R	—	40-2170-0090
			L	—	40-2270-0090
.022"x.028"	-10°	0°	R	—	40-2170-0091
			L	—	40-2270-0091

MANDIBULAR

Single Non-Convertible 1st Molar

Dimensions	Torque	Rotation	R/L	P/N	
				Weldable	Bondable
.022"x.028"	-25°	6°D	R	41-2460-0025	40-2460-0025
			L	41-2360-0025	40-2360-0025
.018"x.025"	-25°	6°D	R	41-1460-0025	-
			L	41-1360-0025	-
.022"x.028"	0°	6°D	R	41-2460-0026	40-2460-0026
			L	41-2360-0026	40-2360-0026
.018"x.025"	0°	6°D	R	41-1460-0026	40-1460-0026
			L	41-1360-0026	40-1360-0026

Single Non-Convertible 2nd Molar

Dimensions	Torque	Rotation	R/L	P/N	
				Weldable	Bondable
.018"x.025"	0°	0°	R	—	40-1470-0090
			L	—	40-1370-0090
.018"x.025"	-25°	0°	R	—	40-1470-0091
			L	—	40-1370-0091
.022"x.028"	-25°	6°D	R	41-2470-0025	40-2470-0025
			L	41-2370-0025	40-2370-0025
.022"x.028"	-25°	6°D	R	—	40-2470-0089
			L	—	40-2370-0089
.022"x.028"	0°	0°	R	—	40-2470-0090
			L	—	40-2370-0090
.022"x.028"	-25°	6°D	R	—	40-2470-0091
			L	—	40-2370-0091

De tubes zijn verpakt per 10 stuks/ Les tubes sont emballés par 10 pcs



Maxillary Single Tubes Convertible



Type Roth, 1st Molar

Dimensions	Torque	Rotation	Length mm	R/L	P/N	
					Weldable	Bondable
.018"x.025"	-14°	14°D	4.0	R	41-1160-0061	40-1160-0061
				L	41-1260-0061	40-1260-0061
.022"x.028"	-14°	14°D	4.0	R	41-2160-0061	40-2160-0061
				L	41-2260-0061	40-2260-0061



Type Roth, 1st Molar

Dimensions	Torque	Rotation	Length mm	R/L	P/N	
					Weldable	Bondable
.018"x.025"	-10°	14°D	4.0	R	41-1160-0012	40-1160-0012
				L	41-1260-0012	40-1260-0012
.022"x.028"	-10°	14°D	4.0	R	41-2160-0012	40-2160-0012
				L	41-2260-0012	40-2260-0012



Type MBT*, 1st Molar

Dimensions	Torque	Rotation	Length mm	R/L	P/N	
					Weldable	Bondable
.018"x.025"	-14°	10°D	3.8	R	41-1160-0022	40-1160-0022
				L	41-1260-0022	40-1260-0022
.022"x.028"	-14°	10°D	3.8	R	41-2160-0022	40-2160-0022
				L	41-2260-0022	40-2260-0022



Type MBT*, 1st Molar

Dimensions	Torque	Rotation	Length mm	R/L	P/N	
					Weldable	Bondable
.018"x.025"	-14°	10°D	4.2	R	41-1160-0110	40-1160-0110
				L	41-1260-0110	40-1260-0110
.022"x.028"	-14°	10°D	4.2	R	41-2160-0110	40-2160-0110
				L	41-2260-0110	40-2260-0110



Type Andrews, 1st Molar

Dimensions	Torque	Rotation	Length mm	R/L	P/N	
					Weldable	Bondable
.018"x.025"	-10°	7°D	3.6	R	41-1160-0034	40-1160-0034
				L	41-1260-0034	40-1260-0034
.022"x.028"	-10°	7°D	3.6	R	41-2160-0034	40-2160-0034
				L	41-2260-0034	40-2260-0034

De tubes zijn verpakt per 10 stuks/ Les tubes sont emballés par 10 pcs



Maxillary Single Tubes Non-Convertible



GET 1st Molar



Dimensions	Torque	Rotation	Length mm	R/L	P/N	
					Weldable	Bondable
.022"x.028"	-20°	10°D	4.0	R	—	40-2160-0510
				L	—	40-2260-0510
.022"x.028"	-20°	0°	4.0	R	—	40-2160-0511
				L	—	40-2260-0511



GET 2nd Molar



Dimensions	Torque	Rotation	Length mm	R/L	P/N	
					Weldable	Bondable
.022"x.028"	-20°	0°	4.0	R	—	40-2170-0120
				L	—	40-2270-0120



Type Roth Distal Extension, 2nd Molar

Dimensions	Torque	Rotation	Length mm	R/L	P/N	
					Weldable	Bondable
.018"x.025"	-14°	14°D	4.0	R	—	40-1170-0013
				L	—	40-1270-0013
.022"x.028"	-14°	14°D	4.0	R	—	40-2170-0013
				L	—	40-2270-0013



Type Roth Distal Extension, 2nd Molar

Dimensions	Torque	Rotation	Length mm	R/L	P/N	
					Weldable	Bondable
.022"x.028"	-10°	14°D	3.0	R	41-2170-0039	40-2170-0039
				L	41-2270-0039	40-2270-0039



Type Roth, 2nd Molar

Dimensions	Torque	Rotation	Length mm	R/L	P/N	
					Weldable	Bondable
.018"x.025"	-14°	14°D	4.2	R	—	40-1170-0014
				L	—	40-1270-0014
.022"x.028"	-14°	14°D	4.2	R	41-2170-0014	40-2170-0014
				L	41-2270-0014	40-2270-0014

De tubes zijn verpakt per 10 stuks/ Les tubes sont emballés par 10 pcs

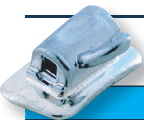


Maxillary Single Tubes Non-Convertible



Type Roth, 2nd Molar

						P/N	
Dimensions	Torque	Rotation	Length mm	R/L	Weldable	Bondable	
.018"x.025"	-14°	0°	4.0	R	—	40-1170-0063	
				L	—	40-1270-0063	
.022"x.028"	-14°	0°	4.0	R	41-2170-0063	40-2170-0063	
				L	41-2270-0063	40-2270-0063	



Type Roth, 2nd Molar

						P/N	
Dimensions	Torque	Rotation	Length mm	R/L	Weldable	Bondable	
.018"x.025"	-14°	14°D	4.0	R	41-1170-0012	40-1170-0012	
				L	41-1270-0012	40-1270-0012	
.022"x.028"	-14°	14°D	4.0	R	41-2170-0012	-	
				L	41-2270-0012	-	



Type MBT*, 2nd Molar

						P/N	
Dimensions	Torque	Rotation	Length mm	R/L	Weldable	Bondable	
.018"x.025"	-14°	10°D	4.2	R	41-1170-0022	40-1170-0022	
				L	41-1270-0022	40-1270-0022	
.022"x.028"	-14°	10°D	4.2	R	41-2170-0022	40-2170-0022	
				L	41-2270-0022	40-2270-0022	



Type Alexander Distal Extension, 2nd Molar

						P/N	
Dimensions	Torque	Rotation	Length mm	R/L	Weldable	Bondable	
.022"x.028"	-10°	7°D	4.0	R	41-2170-0075	—	
				L	41-2270-0075	—	



Type Andrews, 2nd Molar

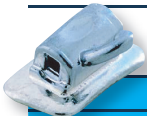
						P/N	
Dimensions	Torque	Rotation	Length mm	R/L	Weldable	Bondable	
.018"x.025"	-10°	7°D	4.0	R	41-1170-0034	40-1170-0034	
				L	41-1270-0034	40-1270-0034	
.022"x.028"	-10°	7°D	4.0	R	41-2170-0034	40-2170-0034	
				L	41-2270-0034	40-2270-0034	

De tubes zijn verpakt per 10 stuks/ Les tubes sont emballés par 10 pcs



Type Andrews, 2nd Molar

						P/N	
Dimensions	Torque	Rotation	Length mm	R/L	Weldable	Bondable	
.018"x.025"	-10°	7°D	3.0	R	41-1170-0048	40-1170-0048	
				L	41-1270-0048	40-1270-0048	
.022"x.028"	-10°	7°D	3.0	R	41-2170-0048	40-2170-0048	
				L	41-2270-0048	40-2270-0048	



Type Andrews Wide Base, 2nd Molar

						P/N	
Dimensions	Torque	Rotation	Length mm	R/L	Weldable	Bondable	
.018"x.025"	-10°	7°D	3.0	R	—	40-1170-0049	
				L	—	40-1270-0049	
.022"x.028"	-10°	7°D	3.0	R	—	40-2170-0049	
				L	—	40-2270-0049	



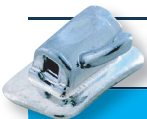
Type Andrews Wide Entry, 2nd Molar

						P/N	
Dimensions	Torque	Rotation	Length mm	R/L	Weldable	Bondable	
.018"x.025"	-10°	7°D	3.5	R	41-1170-0018	40-1170-0018	
				L	41-1270-0018	40-1270-0018	
.022"x.028"	-10°	7°D	3.5	R	41-2170-0018	40-2170-0018	
				L	41-2270-0018	40-2270-0018	



Type Planché, 2nd Molar

						P/N	
Dimensions	Torque	Rotation	Length mm	R/L	Weldable	Bondable	
.022"x.028" -	20°	14°D	4.2	R	41-2170-0071	—	
				L	41-2270-0071	—	



Type Polar, 2nd Molar

						P/N	
Dimensions	Torque	Rotation	Length mm	R/L	Weldable	Bondable	
.018"x.025"	-25°	6°D	4.0	R	—	40-1170-0029	
				L	—	40-1270-0029	



Mini Eruption Tube, 2nd Molar

						P/N	
Dimensions	Torque	Rotation	Length mm	R/L	Without hook	With hook	
.018"x.025"	-10°	0°D	2.0	R	40-1170-0112	40-1170-0019	
				L	40-1270-0112	40-1270-0019	
.022"x.028"	-10°	0°D	2.0	R	40-2170-0112	40-2170-0019	
				L	40-2270-0112	40-2270-0019	

De tubes zijn verpakt per 10 stuks/ Les tubes sont emballés par 10 pcs



Maxillary Double Tubes 1st Molar Convertible



Type Roth Convertible No HG

Dimensions	Torque	Rotation Slot & Aux.	R/L	P/N	
				Weldable	Bondable
.018"x.025" / .018"x.025"	-14°	14°D	R	41-1160-0011	40-1160-0011
			L	41-1260-0011	40-1260-0011
.022"x.028" / .018"x.025"	-14°	14°D	R	41-2160-0011	40-2160-0011
			L	41-2260-0011	40-2260-0011



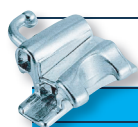
Type Roth Convertible No HG

Dimensions	Torque	Rotation Slot	R/L	P/N	
				Weldable	Bondable
.018"x.025" / .018"x.025"	-14°	14°D	R	41-1160-0055	40-1160-0055
			L	41-1260-0055	40-1260-0055



Type MBT* Convertible No HG

Dimensions	Torque	Rotation Slot	R/L	P/N	
				Weldable	Bondable
.018"x.025"	-14°	10°D	R	41-1160-0104	40-1160-0104
			L	41-1260-0104	40-1260-0104
.022"x.028"	-14°	10°D	R	41-2160-0104	40-2160-0104
			L	41-2260-0104	40-2260-0104



Type MBT* Convertible No HG

Dimensions	Torque	Rotation Slot	R/L	P/N	
				Weldable	Bondable
.018"x.025"	-14°	0°D	R	41-1160-0105	40-1160-0105
			L	41-1260-0105	40-1260-0105
.022"x.028"	-14°	0°D	R	41-2160-0105	40-2160-0105
			L	41-2260-0105	40-2260-0105

De tubes zijn verpakt per 10 stuks/ Les tubes sont emballés par 10 pcs



Extra Torque Convertible No HG

Dimensions	Torque	Rotation Slot	R/L	P/N	
				Weldable	Bondable
.022"x.028"	-20°	20°D	R	41-2160-0030	-
			L	41-2260-0030	-



Type Roth Convertible - HG .045"/Gingival with HG

Dimensions	Torque	Rotation Slot	Rotation HG	R/L	P/N	
					Weldable	Bondable
.018"x.025"	-14°	14°D	14°D	R	41-1160-0054	—
				L	41-1260-0054	—
.022"x.028"	-14°	14°D	14°D	R	41-2160-0054	—
				L	41-2260-0054	—



Type MBT* Convertible - HG .045"/Occlusal With HG

Dimensions	Torque	Rotation Slot	Rotation HG	R/L	P/N	
					Weldable	Bondable
.018"x.025"	-14°	10°D	0°	R	41-1160-0021	—
				L	41-1260-0021	—
.022"x.028"	-14°	10°D	0°	R	41-2160-0021	—
				L	41-2260-0021	—



Type MBT* Convertible - HG .045"/Gingival With HG

Dimensions	Torque	Rotation Slot	Rotation HG	R/L	P/N	
					Weldable	Bondable
.022"x.028"	-14°	10°D	10°D	R	41-2160-0020	-
				L	41-2260-0020	-

De tubes zijn verpakt per 10 stuks/ Les tubes sont emballés par 10 pcs



Maxillary Double Tubes 1st Molar



Type BiDimensional HG Convertible .051"/Occlusal

Dimensions	Torque	Rotation Slot	Rotation HG	R/L	P/N	
					Weldable	Bondable
.022"x.028"	0°	6°D	0°	R	41-2160-0080	—
				L	41-2260-0080	—



Type BiDimensional HG Convertible .051"/Occlusal

Dimensions	Torque	Rotation Slot	Rotation HG	R/L	P/N	
					Weldable	Bondable
.022"x.028"	0°	14°D	7°D	R	41-2160-0083	—
				L	41-2260-0083	—



Type Alexander Convertible - HG .045"/Occlusal

Dimensions	Torque	Rotation Slot	Rotation HG	R/L	P/N	
					Weldable	Bondable
.018"x.025"	-10°	14°D	7°D	R	41-1160-0073	—
				L	41-1260-0073	—
.022"x.028"	-10°	14°D	7°D	R	41-2160-0073	—
				L	41-2260-0073	—



Type Andrews Convertible - HG .045"/Occlusal

Dimensions	Torque	Rotation Slot	Rotation HG	R/L	P/N	
					Weldable	Bondable
.018"x.025"	-10°	7°	7°D	R	41-1160-0079	40-1160-0079
				L	41-1260-0079	40-1260-0079
.022"x.028"	-10°	7°	7°D	R	41-2160-0079	40-2160-0079
				L	41-2260-0079	40-2260-0079

De tubes zijn verpakt per 10 stuks/ Les tubes sont emballés par 10 pcs



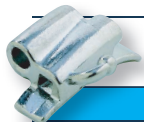
Type Andrews Convertible - HG .051\"/>

Dimensions	Torque	Rotation Slot	Rotation HG	R/L	P/N	
					Weldable	Bondable
.022\"x.028\"	-10°	6°	0°	R	41-2160-0087	—
				L	41-2260-0087	—



Type Andrews Convertible - HG .045\"/>

Dimensions	Torque	Rotation Slot	Rotation HG	R/L	P/N	
					Weldable	Bondable
.018\"x.025\"	-10°	7°D	7°D	R	41-1160-0033	—
				L	41-1260-0033	—
.022\"x.028\"	-10°	7°D	7°D	R	41-2160-0033	—
				L	41-2260-0033	—



Type Andrews Non-Convertible - HG .045\"/>

Dimensions	Torque	Rotation Slot	Rotation HG	R/L	P/N	
					Weldable	Bondable
.018\"x.025\"	-10°	6°D	0°	R	41-1160-0086	—
				L	41-1260-0086	—
.022\"x.028\"	-10°	6°D	0°	R	41-2160-0086	—
				L	41-2260-0086	—



Edgewise Convertible - HG .045\"/>

Dimensions	Torque	Rotation Slot	Rotation HG	R/L	P/N	
					Weldable	Bondable
.018\"x.025\"	0°	0°	0°	R	41-1160-0077	—
				L	41-1260-0077	—
.022\"x.028\"	0°	0°	0°	R	41-2160-0077	—
				L	41-2260-0077	—



Edgewise Non-Convertible - HG .045\"/>

Dimensions	Torque	Rotation Slot	Rotation HG	R/L	P/N	
					Weldable	Bondable
.018\"x.025\"	0°	0°	0°	R	41-1160-0084	—
				L	41-1260-0084	—
.022\"x.028\"	0°	0°	0°	R	41-2160-0084	—
				L	41-2260-0084	—

De tubes zijn verpakt per 10 stuks/ Les tubes sont emballés par 10 pcs

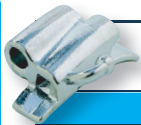


Maxillary Double Tubes 1st Molar



Edgewise Convertible - HG .045"/Occlusal

Dimensions	Torque	Rotation Slot	Rotation HG	R/L	P/N	
					Weldable	Bondable
.018"x.025"	0°	6°D	6°D	R	41-1160-0081	—
				L	41-1260-0081	—
.022"x.028"	0°	6°D	6°D	R	41-2160-0081	—
				L	41-2260-0081	—



Edgewise Non-Convertible - HG .045"/Occlusal

Dimensions	Torque	Rotation Slot	Rotation HG	R/L	P/N	
					Weldable	Bondable
.022"x.028"	0°	6°D	0°	R	41-2160-0085	—
				L	41-2260-0085	—



Type Planché Convertible - HG .045"/Gingival

Dimensions	Torque	Rotation Slot	Rotation HG	R/L	P/N	
					Weldable	Bondable
.022"x.028"	-14°	14°D	0°	R	41-2160-0070	—
				L	41-2260-0070	—

De tubes zijn verpakt per 10 stuks/ Les tubes sont emballés par 10 pcs



Maxillary Triple Tubes 1st Molar



MAXILLARY Triple Tubes 1st Molar
GET HG .045"/Occlusal



						P/N	
Dimensions	Torque	Rotation Slot	Rotation HG	R/L	Weldable	Bondable	
.022"x.028"	-20°	10°D	0°	R	41-2160-0500	—	
				L	41-2260-0500	—	
.022"x.028"	-20°	0°	0°	R	41-2160-0501	—	
				L	41-2260-0501	—	



Type Roth Convertible - HG .045"/Occlusal

						P/N	
Dimensions	Torque	Rotation Slot	Rotation HG	R/L	Weldable	Bondable	
.018"x.025"/ .018"x.025"	-14°	14°D	14°D	R	41-1160-0010	—	
				L	41-1260-0010	—	
.022"x.028"/ .018"x.025"	-14°	14°D	14°D	R	41-2160-0010	—	
				L	41-2260-0010	—	



Type Roth Convertible - HG .045"/Occlusal

						P/N	
Dimensions	Torque	Rotation Slot	Rotation HG	R/L	Weldable	Bondable	
.022"x.028"/ .022"x.028"	-14°	14°D	14°D	R	41-2160-0050	—	
				L	41-2260-0050	—	



Type Roth Convertible - HG .045"/Occlusal

						P/N	
Dimensions	Torque	Rotation Slot	Rotation HG	R/L	Weldable	Bondable	
.018"x.025"	-14°	0°	0°	R	41-1160-0051	—	
				L	41-1260-0051	—	
.022"x.028"	-14°	0°	0°	R	41-2160-0051	—	
				L	41-2260-0051	—	



Type Roth Convertible - HG .051"/Occlusal

						P/N	
Dimensions	Torque	Rotation Slot	Rotation HG	R/L	Weldable	Bondable	
.022"x.028"	-14°	14°D	14°D	R	41-2160-0052	—	
				L	41-2260-0052	—	

De tubes zijn verpakt per 10 stuks/ Les tubes sont emballés par 10 pcs



Maxillary Triple Tubes 1st Molar



Type Roth Convertible - HG .051"/Occlusal

Dimensions	Torque	Rotation Slot	Rotation HG	R/L	P/N	
					Weldable	Bondable
.022"x.028"	-14°	0°	0°	R	41-2160-0053	—
				L	41-2260-0053	—



Type MBT* Convertible F.E.O. .045"/Occlusal

Dimensions	Torque	Rotation Slot	Slot aux.	R/L	P/N	
					Weldable	Bondable
.018"x.025"	-14°	10°	.018"x.025"	R	41-1160-0111	—
				L	41-1260-0111	—
.022"x.028"	-14°	10°	.018"x.025"	R	41-2160-0111	—
				L	41-2260-0111	—



Type Bio-Progressive Convertible - HG .045"/Gingival

Dimensions	Torque	Rotation Slot	Rotation HG	R/L	P/N	
					Weldable	Bondable
.018"x.025"	0°	15°D	15°D	R	41-1160-0042	—
				L	41-1260-0042	—



Type Bio-Progressive Convertible - HG .045"/Gingival

Dimensions	Torque	Rotation Slot	Rotation HG	R/L	P/N	
					Weldable	Bondable
.018"x.025"	0°	0°	0°	R	41-1160-0041	—
				L	41-1260-0041	—
.022"x.028"	0°	0°	0°	R	41-2160-0041	—
				L	41-2260-0041	—



Type Bio-Progressive Non-Convertible - HG .045"/Occlusal

Dimensions	Torque	Rotation Slot	Rotation HG	R/L	P/N	
					Weldable	Bondable
.018"x.025"	0°	0°	0°	R	41-1160-0040	—
				L	41-1260-0040	—
.022"x.028"	0°	0°	0°	R	41-2160-0040	—
				L	41-2260-0040	—

De tubes zijn verpakt per 10 stuks/ Les tubes sont emballés par 10 pcs


Edgewise Convertible - HG .045"/Occlusal

Dimensions	Torque	Rotation Slot	Rotation HG	R/L	P/N	
					Weldable	Bondable
.018"x.025"	0°	6°D	0°	R	41-1160-0065	—
				L	41-1260-0065	—
.022"x.028"	0°	6°D	0°	R	41-2160-0065	—
				L	41-2260-0065	—


Type Polar Convertible - HG .045"/Gingival

Dimensions	Torque	Rotation Slot	Rotation HG	R/L	P/N	
					Weldable	Bondable
.018"x.025"	-20°	10°D	0°	R	41-1160-0027	—
				L	41-1260-0027	—


Type Hilgers Convertible - HG .045"/Occlusal

Dimensions	Torque	Rotation Slot	Rotation HG	R/L	P/N	
					Weldable	Bondable
.018"x.025"	-10°	15°D	0°	R	41-1160-0046	—
				L	41-1260-0046	—
.022"x.028"	-10°	15°D	0°	R	41-2160-0046	—
				L	41-2260-0046	—


Type Melsen Convertible - HG .045"/Occlusal

Dimensions	Torque	Rotation Slot	Rotation HG	R/L	P/N	
					Weldable	Bondable
.018"x.025"	-10°	8°D	0°	R	41-1160-0068	—
				L	41-1260-0068	—
.022"x.028"	-10°	8°D	0°	R	41-2160-0068	—
				L	41-2260-0068	—

De tubes zijn verpakt per 10 stuks/ Les tubes sont emballés par 10 pcs



Mandibular Single Tubes 1st Molar



Convertible



Type Roth

Dimensions	Torque	Angulation	Rotation	Length mm	R/L	P/N	
						Weldable	Bondable
.018"x.025"	-25°	0°	4°D	4.0	R	41-1460-0012	40-1460-0012
					L	41-1360-0012	40-1360-0012
.018"x.025"	-30°	0°	4°D	4.0	R	41-1460-0062	40-1460-0062
					L	41-1360-0062	40-1360-0062
.022"x.028"	-25°	0°	4°D	4.0	R	41-2460-0012	40-2460-0012
					L	41-2360-0012	40-2360-0012
.022"x.028"	-30°	0°	4°D	4.0	R	41-2460-0062	40-2460-0062
					L	41-2360-0062	40-2360-0062



Type MBT*

Dimensions	Torque	Angulation	Rotation	Length mm	R/L	P/N	
						Weldable	Bondable
.018"x.025"	-20°	0°	0°	3.8	R	41-1460-0022	40-1460-0119
					L	41-1360-0022	40-1360-0119
.018"x.025"	-10°	0°	0°	4.0	R	41-1460-0076	40-1460-0076
					L	41-1360-0076	40-1360-0076
.022"x.028"	-20°	0°	0°	3.8	R	41-2460-0119	40-2460-0119
					L	41-2360-0119	40-2360-0119
.022"x.028"	-10°	0°	0°	4.0	R	41-2460-0076	40-2460-0076
					L	41-2360-0076	40-2360-0076



Type Alexander

Dimensions	Torque	Angulation	Rotation	Length mm	R/L	P/N	
						Weldable	Bondable
.018"x.025"	-22°	-6°	5°D	3.8	R	41-1460-0074	—
					L	41-1360-0074	—



Type Andrews

Dimensions	Torque	Angulation	Rotation	Length mm	R/L	P/N	
						Weldable	Bondable
.018"x.025"	-25°	0°	0°	3.6	R	41-1460-0034	40-1460-0034
					L	41-1360-0034	40-1360-0034
.022"x.028"	-25°	0°	0°	3.6	R	41-2460-0034	40-2460-0034
					L	41-2360-0034	40-2360-0034

De tubes zijn verpakt per 10 stuks/ Les tubes sont emballés par 10 pcs

Convertible



Type Planché

Dimensions	Torque	Angulation	Rotation	Length mm	R/L	P/N	
						Weldable	Bondable
.022"x.028"	-25°	-6°	6°D	4.0	R	41-2460-0121	—
					L	41-2360-0121	—



Edgewise

Dimensions	Torque	Angulation	Rotation	Length mm	R/L	P/N	
						Weldable	Bondable
.022"x.028"	0°	0°	6°D	4.0	R	—	40-2460-0092
					L	—	40-2360-0092



Edgewise

Dimensions	Torque	Angulation	Rotation	Length mm	R/L	P/N	
						Weldable	Bondable
.018"x.025"	0°	0°	0°	4.0	R	-	40-1460-0093
					L	-	40-1360-0093
.022"x.028"	0°	0°	0°	4.0	R	41-2460-0093	40-2460-0093
					L	41-2360-0093	40-2360-0093



Type Polar

Dimensions	Torque	Angulation	Rotation	Length mm	R/L	P/N	
						Weldable	Bondable
.018"x.025"	-22°	0°	4°D	4.0	R	—	40-2460-0029
					L	—	40-2360-0029

De tubes zijn verpakt per 10 stuks/ Les tubes sont emballés par 10 pcs



Mandibular Single Tubes 2nd Molar



Non-Convertible



Type Roth

							P/N	
Dimensions	Torque	Angulation	Rotation	Length mm	R/L	Weldable	Bondable	
.018"x.025"	-25°	0°	6°D	4.0	R	41-1470-0012	40-1470-0012	
					L	41-1370-0012	40-1370-0012	
.022"x.028"	-25°	0°	6°D	4.0	R	41-2470-0012	40-2470-0012	
					L	41-2370-0012	40-2370-0012	



Type Roth

							P/N	
Dimensions	Torque	Angulation	Rotation	Length mm	R/L	Weldable	Bondable	
.018"x.025"	-30°	-1°	4°D	4.0	R	41-1470-0064	40-1470-0064	
					L	41-1370-0064	40-1370-0064	
.022"x.028"	-30°	-1°	4°D	4.0	R	41-2470-0064	40-2470-0064	
					L	41-2370-0064	40-2370-0064	



Type MBT*

							P/N	
Dimensions	Torque	Angulation	Rotation	Length mm	R/L	Weldable	Bondable	
.018"x.025"	-10°	0°	0°	3.2	R	41-1470-0022	40-1470-0022	
					L	41-1370-0022	40-1370-0022	
.022"x.028"	-10°	0°	0°	3.2	R	41-2470-0022	40-2470-0022	
					L	41-2370-0022	40-2370-0022	



Plan. Type

							P/N	
Dimensions	Torque	Angulation	Rotation	Length mm	R/L	Weldable	Bondable	
.022"x.028"	-27°	-10°	6°D		R	41-2470-0012	—	
					L	41-2370-0012	—	



Alexander Type

							P/N	
Dimensions	Torque	Angulation	Rotation	Length mm	R/L	Weldable	Bondable	
.022"x.028"	-27°	-10°	6°D		R	—	40-2470-0074	
					L	—	40-2370-0074	

De tubes zijn verpakt per 10 stuks/ Les tubes sont emballés par 10 pcs

Non-Convertible



Type Andrews

							P/N	
Dimensions	Torque	Angulation	Rotation	Length mm	R/L	Weldable	Bondable	
.018"x.025"	-25°	0°	0°	4.0	R	—	40-1470-0034	
					L	—	40-1370-0034	
.022"x.028"	-25°	0°	0°	4.0	R	—	40-2470-0034	
					L	—	40-2370-0034	
.018"x.025"	-25°	0°	4°D	3.0	R	—	40-1470-0049	
					L	—	40-1370-0049	
.022"x.028"	25°	0°	4°D	3.0	R	—	40-2470-0049	
					L	—	40-2370-0049	



Type Andrews Wide Entry (Peucat)

							P/N	
Dimensions	Torque	Angulation	Rotation	Length mm	R/L	Weldable	Bondable	
.018"x.025"	-25°	0°	4°D	3.5	R	41-1470-0018	40-1470-0018	
					L	41-1370-0018	40-1370-0018	
.022"x.028"	-25°	0°	4°D	3.5	R	41-2470-0018	40-2470-0018	
					L	41-2370-0018	40-2370-0018	



Type Polar

							P/N	
Dimensions	Torque	Angulation	Rotation	Length mm	R/L	Weldable	Bondable	
.018"x.025"	-25°	5°	7°D	4	R	—	40-1470-0029	
					L	—	40-1370-0029	



Edgewise

							P/N	
Dimensions	Torque	Angulation	Rotation	Length mm	R/L	Weldable	Bondable	
.018"x.025"	0°	0°	0°	4.6	R	—	40-1470-0094	
					L	—	40-1370-0094	
.022"x.028"	0°	0°	0°	4.6	R	41-2470-0094	40-2470-0094	
					L	41-2370-0094	40-2370-0094	



Edgewise

							P/N	
Dimensions	Torque	Angulation	Rotation	Length mm	R/L	Weldable	Bondable	
.018"x.025"	0°	0°	0°	4.0	R	41-1470-0095	40-1470-0095	
					L	41-1370-0095	40-1370-0095	
.022"x.028"	0°	0°	0°	4.0	R	41-2470-0095	40-2470-0095	
					L	41-2370-0095	40-2370-0095	

De tubes zijn verpakt per 10 stuks/ Les tubes sont emballés par 10 pcs



Mandibular Single Tubes 2nd Molar



Non-Convertible



Edgewise

Dimensions	Torque	Angulation	Rotation	Length mm	R/L	P/N	
						Weldable	Bondable
.018"x.025"	0°	0°	6°D	4.0	R	—	40-1470-0096
					L	—	40-1370-0096
.022"x.028"	0°	0°	6°D	4.0	R	41-2470-0096	40-2470-0096
					L	41-2370-0096	40-2370-0096



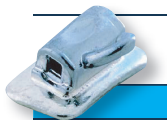
Edgewise

Dimensions	Torque	Angulation	Rotation	Length mm	R/L	P/N	
						Weldable	Bondable
.018"x.025"	0°	0°	6°D	3.2	R	—	40-1470-0097
					L	—	40-1370-0097
.022"x.028"	0°	0°	6°D	3.2	R	41-2470-0096	40-2470-0097
					L	41-2370-0096	40-2370-0097



Edgewise

Dimensions	Torque	Angulation	Rotation	Length mm	R/L	P/N	
						Weldable	Bondable
.018"x.025"	0°	0°	0°	3.2	R	—	40-1470-0098
					L	—	40-1370-0098
.022"x.028"	0°	0°	0°	3.2	R	41-2470-0098	40-2470-0098
					L	41-2370-0098	40-2370-0098



Small

Dimensions	Torque	Angulation	Rotation	Length mm	R/L	P/N	
						Weldable	Bondable
.018"x.025"	-25°	0°	4°D	3.0	R	—	40-1470-0048
					L	—	40-1370-0048
.022"x.028"	-25°	0°	4°D	3.0	R	—	40-2470-0048
					L	—	40-2370-0048



Mini Eruption Tube for 2nd Molar

Dimensions	Torque	Angulation	Rotation	Length mm	R/L	P/N	
						Without hook	With hook
.018"x.025"	-25°	0°	0°	2.0	R	40-1470-0112	40-1470-0019
					L	40-1370-0112	40-1370-0019
.022"x.028"	-25°	0°	0°	2.0	R	40-2470-0112	40-2470-0019
					L	40-2370-0112	40-2370-0019

De tubes zijn verpakt per 10 stuks/ Les tubes sont emballés par 10 pcs



Mandibular Double Tubes 1st Molar



Convertible with Tube Bumper



Type BiDimensional .051"/Gingival

Dimensions	Torque	Angulation Tube	Rotation Slot	Rotation Aux.	R/L	P/N	
						Weldable	Bondable
.022"x.028"	0°	0°	0°	0°	R	41-2460-0067	—
					L	41-2360-0067	—



Type Cetlin .045"/Gingival

Dimensions	Torque	Angulation Tube	Rotation Slot	Rotation Aux.	R/L	P/N	
						Weldable	Bondable
.018"x.025"	-25°	0°	4°D	5M	R	41-1460-0037	—
					L	41-1360-0037	—
.022"x.028"	-25°	0°	4°D	5M	R	41-2460-0037	—
					L	41-2360-0037	—

Convertible



Type Roth Convertible

Dimensions	Torque	Angulation Tube	Rotation Slot	Rotation Aux.	R/L	P/N	
						Weldable	Bondable
.018"x.025" -	25°	0°	4°D	0°	R	41-1460-0011	40-1460-0011
					L	41-1360-0011	40-1360-0011
.022"x.028"	-25°	0°	4°D	0°	R	41-2460-0011	40-2460-0011
					L	41-2360-0011	40-2360-001



Type Roth Occlusal Hook

Dimensions	Torque	Angulation Tube	Rotation Slot	Rotation Aux.	R/L	P/N	
						Weldable	Bondable
.022"x.028"	-30°	-1°	4°D	0°	R	41-2460-0058	40-2460-0058
					L	41-2360-0058	40-2360-0058

De tubes zijn verpakt per 10 stuks/ Les tubes sont emballés par 10 pcs



Mandibular Double Tubes 1st Molar



Convertible



Type Roth Gingival Hook

Dimensions	Torque	Angulation Tube	Rotation Slot	Rotation Aux.	R/L	P/N	
						Weldable	Bondable
.022"x.028"	-30°	-1°	4°D	0°	R	41-2460-0060	40-2460-0060
					L	41-2360-0060	40-2360-0060



Extra Torque

Dimensions	Torque	Angulation Tube	Rotation Slot	Rotation Aux.	R/L	P/N	
						Weldable	Bondable
.018"x.025"	-10°	0°	4°D	0°	R	41-1460-0070	—
					L	41-1360-0070	—
.022"x.028"	-10°	0°	4°D	0°	R	41-2460-0070	40-2460-0070
					L	41-2360-0070	40-2360-0070



Extra Torque Wide Base

Dimensions	Torque Slot & Aux.	Angulation Tube	Rotation Slot	Rotation Aux.	R/L	P/N	
						Weldable	Bondable
.018"x.025"	-10°	0°	4°D	0°	R	—	40-1460-0031
					L	—	40-1360-0031
.022"x.028"	-10°	0°	4°D	0°	R	—	40-2460-0031
					L	—	40-2360-0031



Type Bio-Progressive

Dimensions	Torque Slot	Torque Aux.	Rotation Slot	Rotation Aux.	R/L	P/N	
						Weldable	Bondable
.018"x.025"	0°	0°	0°	0°	UNI	41-1660-0045	40-1660-0045
.022"x.028"	0°	0°	0°	0°	UNI	41-2660-0045	40-2660-0045



Type Polar

Dimensions	Torque Slot	Torque Aux.	Rotation Slot	Rotation Aux.	R/L	P/N	
						Weldable	Bondable
.018"x.025"	-25°	0°	4°D	0°	R	41-1460-0028	—
					L	41-1360-0028	—

De tubes zijn verpakt per 10 stuks/ Les tubes sont emballés par 10 pcs

Convertible



Type Hilgers

Dimensions	Torque Slot	Torque Aux.	Rotation Slot	Rotation Aux.	R/L	P/N	
						Weldable	Bondable
.018"x.025"	-27°	0°	12°D	0°	R	41-1460-0047	—
					L	41-1360-0047	—
.022"x.028"	-27°	0°	12°D	0°	R	41-2460-0047	—
					L	41-2360-0047	—



Type Melsen

Dimensions	Torque Slot	Torque Aux.	Rotation Slot	Rotation Aux.	R/L	P/N	
						Weldable	Bondable
.018"x.025"	-27°	0°	8°D	0°	R	41-1460-0069	—
					L	41-1360-0069	—
.022"x.028"	-27°	0°	8°D	0°	R	41-2460-0069	—
					L	41-2360-0069	—

Non- Convertible



Type Roth

Dimensions	Torque	Angulation Tube	Rotation Slot	Rotation Aux.	R/L	P/N	
						Weldable	Bondable
.022"x.028"	-30°	-1°	4°D	0°	R	41-2460-0059	—
					L	41-2360-0059	—

Type Bio-Progressive



Dimensions	Torque Slot	Torque Aux.	Rotation Slot	Rotation Aux.	R/L	P/N	
						Weldable	Bondable
.018"x.025"	0°	0°	0°	0°	UNI	41-1660-0044	40-1660-0044
.022"x.028"	0°	0°	0°	0°	UNI	41-2660-0044	40-2660-0044

De tubes zijn verpakt per 10 stuks/ Les tubes sont emballés par 10 pcs



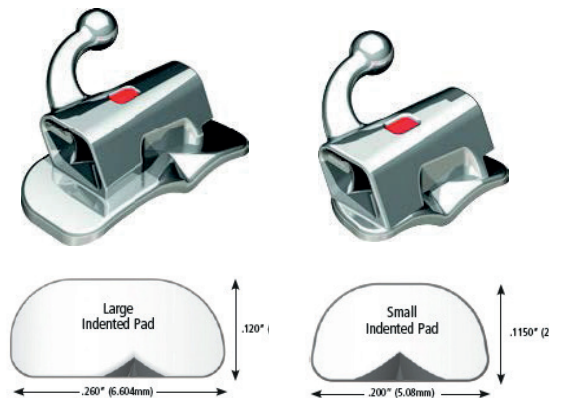
VIPER Tubes

Buccal Single Non-Convertible

VIPER™ LOW PROFILE BUCCAL TUBES

Innovative technology and sleek, stylish comfort

VIPER™ Low Profile Buccal Tubes Sleek and stylish, G&H®'s Viper™ buccal tube incorporates the latest design technology with a growing industry demand for comfortable, easy-to-use appliances that simplify treatment and reduce valuable chair time.



MAXILLARY 1st & 2nd Molar

Torque	Offset	Rx	M/D	R/L	ID	Bondable			
						.018	.022	.018	.022
0°	0°	STD	4.2 mm	R	◆	NS3B-821E	NS3B-221E	NS3B-821I	NS3B-221I
				L	◆	NS3B-822E	NS3B-222E	NS3B-822I	NS3B-222I
-10°	8°	Roth	4.2 mm	R	●	NS3B-825E	NS3B-225E	NS3B-825I	NS3B-225I
				L	●	NS3B-826E	NS3B-226E	NS3B-826I	NS3B-226I
-14°	10°	MBT	4.2 mm	R	●	NS3B-833E	NS3B-233E	NS3B-833I	NS3B-233I
				L	●	NS3B-834E	NS3B-234E	NS3B-834I	NS3B-234I

MANDIBULAR 1st & 2nd Molar

Torque	Offset	Rx	M/D	R/L	ID	Bondable			
						.018	.022	.018	.022
0°	0°	STD	4.2 mm	R	◆	NS3B-822E	NS3B-222E	NS3B-822I	NS3B-222I
				L	◆	NS3B-821E	NS3B-221E	NS3B-821I	NS3B-221I
-25°	5°	Roth	4.2 mm	R	■	NS3B-827E	NS3B-227E	NS3B-827I	NS3B-227I
				L	■	NS3B-828E	NS3B-228E	NS3B-828I	NS3B-228I
-20°	0°	MBT	4.2 mm	R	▲	NS3B-809E	NS3B-209E	NS3B-809I	NS3B-209I
				L	▲	NS3B-810E	NS3B-210E	NS3B-810I	NS3B-210I

De tubes zijn verpakt per 10 stuks/ Les tubes sont emballés par 10 pcs

Evolve Flow Bondable Tubes

Positioning Guide

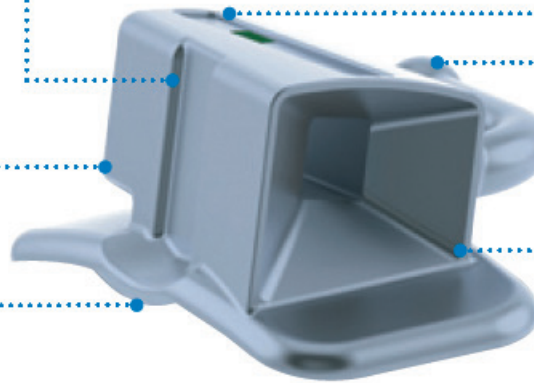
Occlusal/gingival positioning guides ensure a secure grip and ease of placement

Distal Notch

Evolve Flow features a distal notch for ligation and tieback of auxiliaries

Contoured Base

Anatomically contoured base with occlusal indent ensures accurate fit, whilst the 80 gauge mesh pad ensures superior bond strength



Low profile

The contoured surfaces are low profile and tapered for patient comfort

Low profile hook

Low profile hooks guarantee patient comfort and allow for easy placements of attachments

The Funnelled Entrance

The Evolve Flow funnelled entrance allows for easy wire insertion

Roth .022	1 st Molars	2 nd Molars
Upper Left	DB07-1350UL	DB07-1371UL
Upper Right	DB07-1350UR	DB07-1371UR
Lower Left	DB07-1350LL	DB07-1371LL
Lower Right	DB07-1350LR	DB07-1371LR

MBT .022	1 st Molars	2 nd Molars
Upper Left	DB07-1360UL	DB07-1372UL
Upper Right	DB07-1360UR	DB07-1372UR
Lower Left	DB07-1360LL	DB07-1372LL
Lower Right	DB07-1360LR	DB07-1372LR

Roth .018	1 st Molars	2 nd Molars
Upper Left	DB07-1370UL	DB07-1373UL
Upper Right	DB07-1370UR	DB07-1373UR
Lower Left	DB07-1370LL	DB07-1373LL
Lower Right	DB07-1370LR	DB07-1373LR

MBT .018	1 st Molars	2 nd Molars
Upper Left	DB07-1362UL	DB07-1374UL
Upper Right	DB07-1362UR	DB07-1374UR
Lower Left	DB07-1362LL	DB07-1374LL
Lower Right	DB07-1362LR	DB07-1374LR

De tubes zijn verpakt per 10 stuks/ Les tubes sont emballés par 10 pcs

