



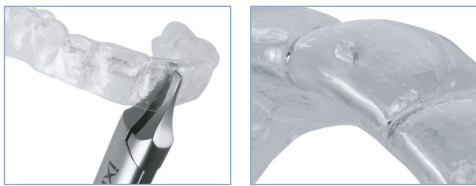
# Instrumenten/ Instruments

# ALIGNER PLIERS

## IX887

### The Torque Aligner Plier

The IX887 creates a horizontal indentation (0.75 x 1.5mm), creating a force point for individual lingual or labial root torque.



## IX892

### Ixion Aligner Scissors

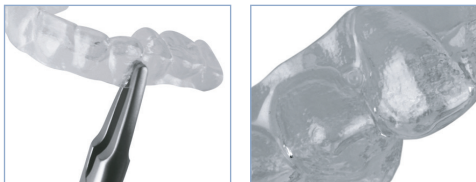
These lightweight scissors are used for removing excess thermoformed material, and for the smooth trimming and shaping of aligners. Their streamline design, graduated curve and tapered beak makes for easy use - even in tight areas.



## IX889

### The Retention Aligner Plier

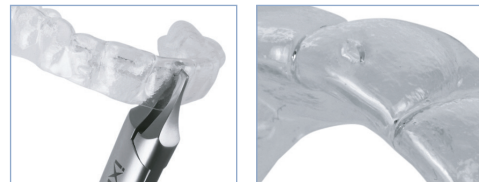
to create a circular indentation (1mm).



## IX888

### The Rotation Aligner Plier

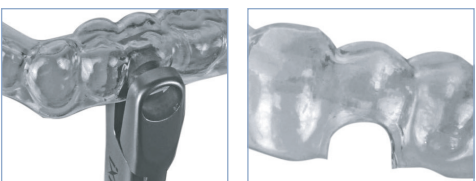
The IX888 creates a vertical indentation / force point (0.75 x 1.5mm) on the tooth surface to optimise tooth rotation.



## IX891

### The Hole Punch Plier

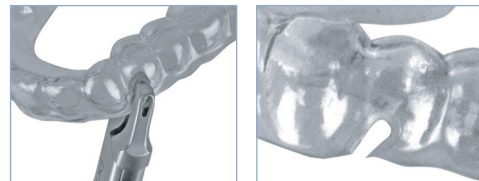
Creates a half-circle cut-out in the aligner to give clearance for bonded buttons, tubes or brackets with hooks for elastics.



## IX890

### The Tear Drop Plier

Create a cut at the gingival margin, anywhere along the arch - buccally, labially or lingually - to conveniently hold elastics in place while the aligner is placed in the mouth.



# LINGUAL SERIES

## IX950

**Weingart 60° Angle**  
Maximum .018" (.46mm) wire.



## IX951

**Weingart 60° Angle with T.C.**  
Same features as ix950 with the addition of Tungsten Carbide tips.  
Maximum .018" (.46mm) wire.



## IX952

**Stepped Tweed Arch Plier**  
Designed for torquing and bending both square and rectangular wires.



## IX949

**Slim Tweed Plier**  
This instrument has slimmer tips - just 0.9mm



## IX953

**Cinch Back**  
The serrated tips of this instrument hold the wire securely while bending the wire 90° distal to the buccal tube.

For use with Nickel Titanium wires  
.012" - .018" (.30 x .46mm).



## IX954

**Cinch Back - Large Wire**  
Same features as ix953 but designed to work with larger wires.

For use with wires from .016" (.41mm)  
up to .021" x .025" (.55 x .64mm).



## IX955

**Bracket Removing Plier**



## IX960

**Lingual Anterior Debonding Plier**



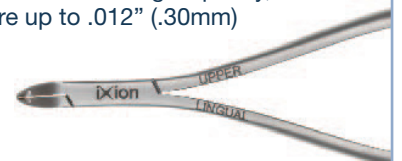
## IX956

**Mini Ligature Cutter 50° Angle Upper**  
Maximum Cutting Capacity, soft wire up to .012" (.30mm)



## IX956s

**Micro Ligature Cutter Upper 50° Angle Upper**  
Maximum Cutting Capacity, soft wire up to .012" (.30mm)



# LINGUAL SERIES



## IX957

**Mini Ligature Cutter 60° Angle Lower**  
Maximum Cutting Capacity, soft wire up to .012" (.30mm)



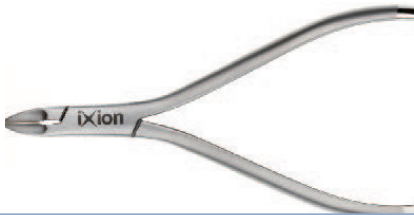
## IX957s

**Micro Ligature Cutter 60° Angle Lower**  
Same features as ix957, but with shorter handles. Maximum Cutting Capacity, Soft wire up to .012" (.30mm)



## IX911

**Micro Ligature Cutter**  
Maximum Cutting Capacity: soft wire up to .012" (.30mm)



## IX911L

**Micro Long Handled Ligature Cutter**  
Maximum Cutting Capacity: soft wire up to .012" (.30mm)



## IX958 / IX958S

**Flush Cut Distal End Cutter**  
Standard / Small

Minimum Cutting Capacity:  
ix958 - .016" - ix958s .012"  
Maximum Cutting Capacity:  
ix958 archwires up to .021" x .025"  
ix958s archwires up to .016" x .025"



## IX959

**Long Handled Distal End Cutter**  
With T.C. inserts.

Minimum Cutting Capacity: .012"  
Maximum Cutting Capacity: .018"x.025"



## IX940

**Curved Smaha**

excellent for placing elastomerics to brackets



## IX632

**Lingual Bracket and Bondable Tube Holder**



## IX941

**Curved Lingual Micro Mosquito**



## IX945

**Lingual Tucker**



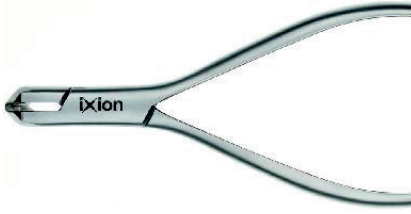
# CUTTERS



## IX900

### Distal End Cutter

Cutting Capacity: archwires up to .021" x .025"



## IX900s

### Distal End Cutter

Allows you to routinely cut beta titanium, braided and co-axial wires with ease. Cutting Capacity: archwires up to .016" x .022"



## IX901

### Long Handled Distal End Cutter

Cutting Capacity: archwires up to .021" x .025"



## IX905

### Hard Wire Cutter

Minimum Cutting Capacity: .012"  
Maximum Cutting Capacity: archwires up to .021" x .025"



**iXion™**  
Instruments

## IX902 / IX902s

### Flush Cut Distal End Cutter Standard / Small

#### IX902

Minimum Cutting Capacity: .016"  
Maximum Cutting Capacity: archwires up to .021" x .025"

#### IX902s

Minimum Cutting Capacity: .012"  
Maximum Cutting Capacity: archwires up to .016" x .025"



Using none flush cut distal end



Using flush cut distal end



# CUTTERS

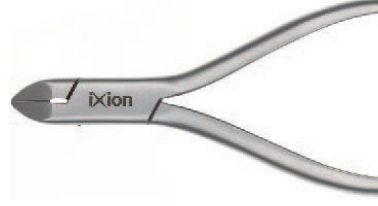
## IX915

**Hard Wire Cutter with T.C. Inserts**  
Minimum Cutting Capacity: .012"  
Maximum Cutting Capacity: archwires up to .021"x .025"



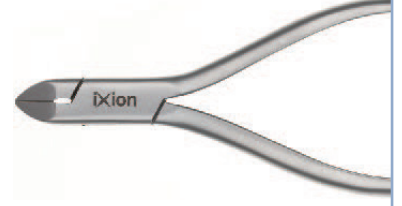
## IX906

**Hard Wire Cutter 15° Angle**  
Minimum Cutting Capacity: .012"  
Maximum Cutting Capacity: archwires up to .021"x .025"



## IX916

**Hard Wire Cutter 15° Angle with T.C. Inserts**  
Minimum Cutting Capacity: .012"  
Maximum Cutting Capacity: archwires up to .021"x .025"



## IX908

**Heavy Duty Hard Wire Cutter**  
Minimum Cutting Capacity: .014" (.36mm)  
Maximum Cutting Capacity: wire up to .060" (1.5mm)



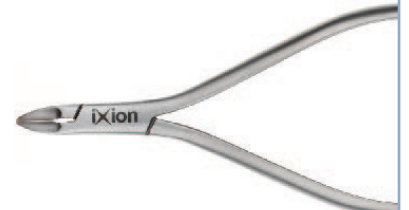
## IX910

**Pin Ligature Cutter 7° Angle**  
Maximum Cutting Capacity: soft wire up to .016"



## IX911

**Micro Ligature Cutter**  
The inserted tips ensure precision cutting of ligature wire and elastics. Maximum Cutting Capacity: soft wire up to .012"



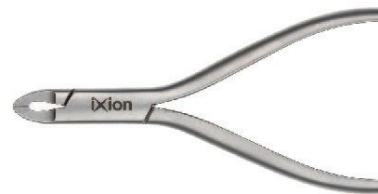
## IX911L

**Micro Long Handled Ligature Cutter**  
Maximum Cutting Capacity: soft wire up to .012"



## IX912

**Standard Ligature Cutter**  
Maximum Cutting Capacity: soft wire up to .015"



## IX913

**Standard Soft Wire Ligature Cutter**  
Maximum Cutting Capacity: soft wire up to .012"

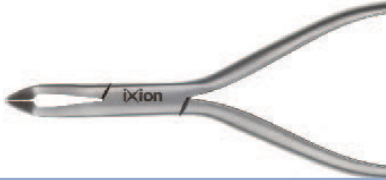


# UTILITY PLIERS

## IX800

### Small Weingart

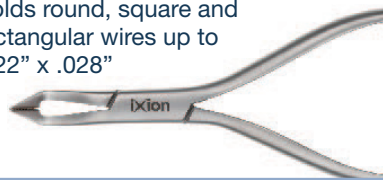
Holds round, square and rectangular wires up to .022" x .028



## IX801

### Small Weingart with T.C.

Inserted T.C. tips providing maximum wire control. Holds round, square and rectangular wires up to .022" x .028"



## IX802

### Large Weingart

Holds wire up to .030"



## IX803

### Large Weingart with T.C.

Holds wire up to .030"



## IX804

### Fine Tipped Weingart

Holds wire up to .022" x .028"



## IX843

### Utility Weingart with Inserted Tips

Holds wire up to .022" x .028"



## IX805

### How Plier (Straight)

Holds wire up to .022" x .028"



## IX806

### How Plier (Angled)

Holds wire up to .022" x .028"



## IX820

### Crimpable Archwire Hook Plier



## IX834

### Crimping Plier



## IX825

### Posterior Band Remover (Short)

Replacement Tips 3/16" (5mm) - IX895S

Replacement Tips 1/8" (4mm) - IX896S



# UTILITY PLIERS

## IX826

**Posterior Band Remover (Long)**  
Replacement Tips 3/16" (5mm) - IX895S  
Replacement Tips 1/8" (4mm) - IX896S



## IX838

**Posterior Band Remover Plier**  
Replacement Tips. Pack of 10.



## IX827

**Direct Bond Remover (Straight)**



## IX828

**Direct Bond Remover (Angled 60°)**



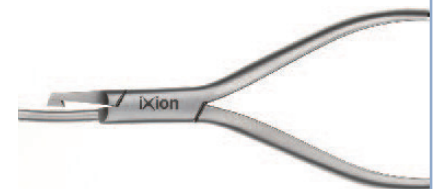
## IX829

**Direct Bond Remover**



## IX835

**Adhesive Removing Plier**  
Replacement Metal Pad - IX836 - Sold in packs of 2.  
Replacement Vinyl Tube 15cm - IX837



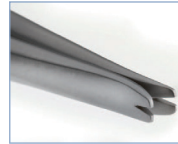
## IX840

**Small Adams Plier**  
Effective for wires up to .030"



## IX824

**Coon Ligature Tying Plier**



## IX841

**Force Module Separator**



## IX895S

**Replacement Tips 3/16" (5mm)**  
for IX825/826, Pk 3



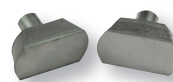
## IX896S

**Replacement Tips 1/8" (4mm)**  
for IX825/826, Pk 3



## IX836

**Replacement Metal Pad**  
for IX835, Pk 2



## IX837

**Replacement Vinyl (150mm)**  
for IX835



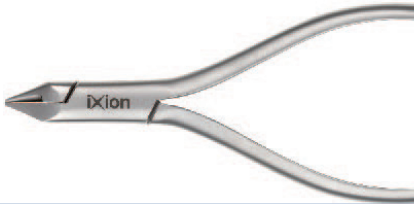


# WIRE BENDING PLIERS

## IX807

### Light Wire Plier

Tips bend archwires from .012" to .020".



## IX808

### Light Wire Plier with Cutter and 2 Grooves

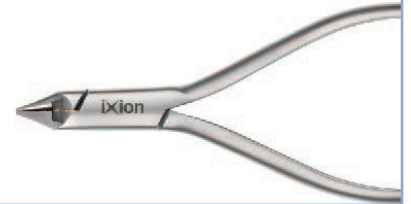
Tips bend archwires from .012" to .020".  
Cutter at the base of beaks cuts archwires from .014" to .020".



## IX809

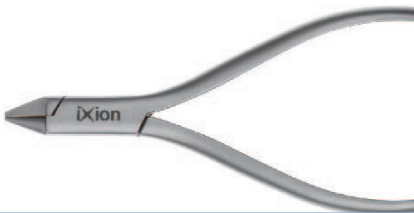
### Light Wire Plier with Cutter

Tips bend archwires from .012" to .020".  
Cutter at the base of beaks cuts archwires from .014" to .020".



## IX810

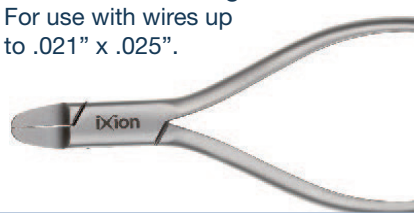
### Bird Beak Plier



## IX813

### Tweed Arch Forming Plier

For use with wires up to .021" x .025".



## IX821

### Long Beak Light Wire Plier

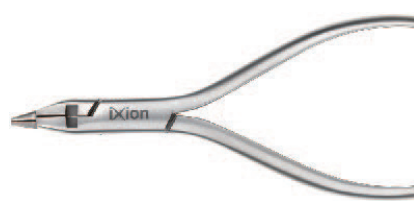
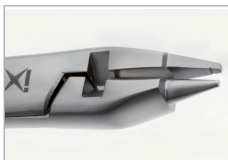
For use with round and square wire up to .020" (.51mm).



## IX811

### Light Wire Contouring & Cutting Plier

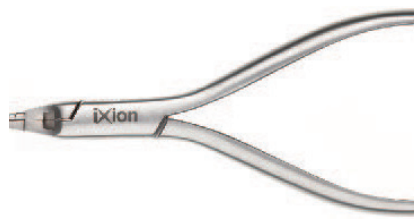
The precision tips enable contouring of loops and arches up to .021" x .025" and the built in cutter that allows wires to be cut from .014" to .020".



## IX812

### Tweed Loop Forming Plier with Cutter

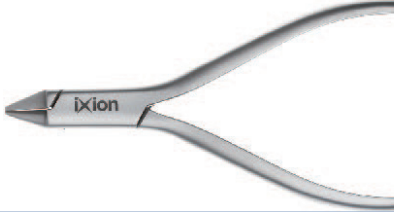
The tip has three sections of 1.2mm, 1.8mm and 2.0mm.  
For use with round and square wire up to .021 x .025".  
The built in cutter allows wire to be cut from .014" to .020".



# WIRE BENDING PLIERS

## IX872

**Bird Beak Plier with T.C.**



## IX873

**Torquing Plier Set**



## IX819

**Small 3-Jaw Plier**  
For working with wire up to .020".



## IX814

**O'Brien Loop Forming Plier**  
The perfect plier for making Accurate, Omega and Closing loops. Can be used with round & square wire up to .021" x .025" (.55 x .64mm).



## IX815

**Nance Plier**  
Precision loop forming with four step tips 3mm, 4mm, 5mm and 6mm. Excellent for round and square wires up to .022".



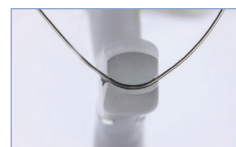
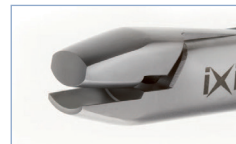
## IX816

**3-Jaw Plier**  
For use with wire up to .030".



## IX817

**De La Rosa**  
For use with wires up to .021" x .025".



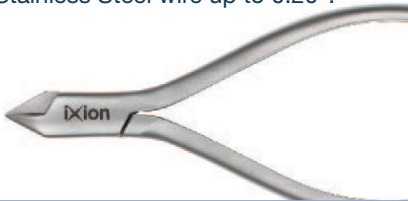
# WIRE BENDING PLIERS



## IX823

### Fine 3-Jaw Plier

Can be used on Nickel Titanium and Stainless Steel wire up to 0.20".



## IX823XF

### Extra Fine 3-Jaw NiTi Plier

Can be used on Nickel Titanium wire up to 0.14".



## IX975

### Intra Oral Detailing Plier 0.75mm Step

For use up to max .018" x.018" wire.



## IX832

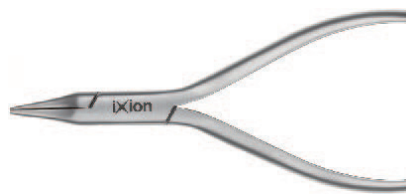
### V-Bend Plier

For use with NiTi wires up to .018".



## IX830

### Hollow Chop



## IX976

### Intra Oral Detailing Plier 0.5mm Step

For use up to max .018" x.018" wire.



# HAND INSTRUMENTS & HEMOSTATS



**IX650**  
Probe Single Ended



**IX651**  
Probe Double Ended



**IX652**  
Ligature Tucker



**IX653**  
Mitchell Trimmer



**IX656**  
Cement Spatula



**IX657**  
Flat Plastic



**IX654**  
Mirror Handle



**IX655**  
Mirror Heads Pk 12

# HAND INSTRUMENTS & HEMOSTATS

**IX850**

**Direct Bond Bracket Holder**



**IX630**

**Direct Bond Holder with Positioning Blade**



**IX631**

**Deluxe Direct Bond Holder**



**IX632**

**Lingual Bracket and Bondable Tube Placer**



**IX633**

**Curved Bracket Holder**



**IX845**

**Mershon Band Pusher**



**IX846**

**Mershon Band Pusher  
with Small Round Handle**



**IX861**

**Mathieu Needle Holder with T.C.**  
Designed for twisting  
ligature wire.



**IX862**

**Mathieu Needle Holder**  
Designed for twisting  
ligature wire.



**IX863**

**Smaha (Straight)**  
Fine tips excellent for placing  
elastomeric ligatures.



# HAND INSTRUMENTS & HEMOSTATS

## IX864

**Curved Mathieu Needle Holder with T.C.**



## IX860

**Fine Tip Mathieu Needle Holder**



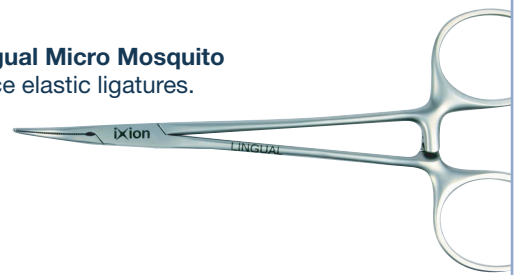
## IX940

**Curved Smaha**  
Excellent for placing elastomerics to lingual brackets.



## IX941

**Curved Lingual Micro Mosquito**  
Used to place elastic ligatures.



## IX855

**Mosquito Forceps**



## IX870

**Serrated Scissors**



## IX866

**Bracket Height Gauge**  
3.5mm-5mm .018  
For precise bracket positioning of .018 brackets.



## IX867

**Bracket Height Gauge**  
3.5mm-5mm .022  
For precise bracket positioning of .022 brackets.



# HAND INSTRUMENTS & HEMOSTATS

## IX892

**Ixion Aligner Scissors**



## IX101

**Small Rack**  
Autoclavable  
Stainless Steel Rack  
size L 110mm x H 120mm



## IX103

**Large Rack** Autoclavable Stainless Steel Rack  
size L 310mm x H 125mm



## IX102

**Medium Rack**  
Autoclavable  
Stainless Steel Rack  
size L 155mm x H 120mm



## DB04-000/1

**Clear Upright Instrument Rack**  
Keep your instruments organised  
will hold up to 15 instruments



# LABORATORY PLIERS

## IX164

### Adams Plier

Bends hard wire up to .039" (1.00mm) max.



## IX165

### Spring Former Plier

With tungsten Carbide inserted tips.  
Bends hard wire up to 0.28" (0.7mm) max.



## IX700

### Universal General Use Plier

Both Tips are serrated. Bends hardwire up to .039" (1.0mm) max. Cuts hardwire up to .028" (0.7mm) max.



## IX701

### Three Jaw Plier

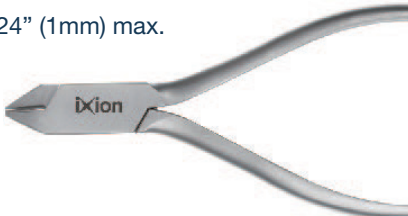
Can be used to bend the arms of rapid expansion screws. For hard wire up to 0.59" (1.5mm) max.



## IX702

### Three Jaw Plier

For hard wire up to .024" (1mm) max.



## IX703

### Young Plier

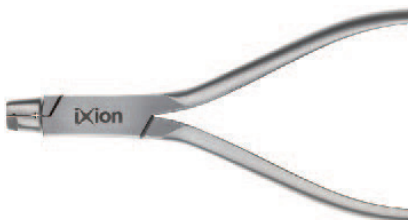
For labial arches and canine loops.  
For hard wire up to .028" (0.7mm) max.



## IX704

### Swartz Plier

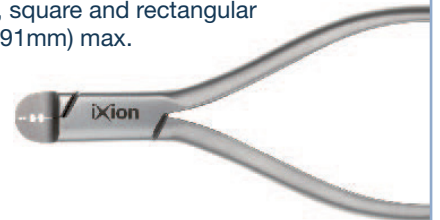
Arrow clasp forming plier.  
For hard wire up to .028" (0.7mm.) max.



## IX705

### Lingual Arch Bending Plier

Grooved to hold all larger wire sizes, jaw width is .120" (3.05mm). Also ideal for double and triple back bends. Bends round, square and rectangular wires up to .036" (0.91mm) max.





# LABORATORY PLIERS

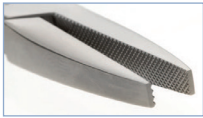


## IX706

### Flat Nose Plier

Both Tips serrated.

For use with wire up to .036" (0.9mm) max.

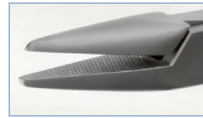


## IX707

### Conical Flat Nose Plier

Has one serrated and one smooth tip.

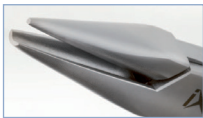
For use with wire up to .028" (0.7mm.) max.



## IX708

### Optical Plier

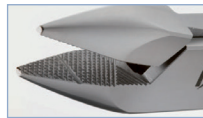
For hardwire up to .028" (0.7mm) max.



## IX710

### Flat Nose Plier

For chairside adjustments of wire up to .028" (0.7mm).



## IX711

### Heavy Duty Bird Beak

Bending of wire up to .040" 1mm.



## IX712

### Heavy Duty Hard Wire Cutter

For easy cutting of hard wire up to .060" (1.5mm).



## BRACKET DELUXE HOLDER

DB05-0421



## STANDARD BRACKET HOLDER

DB05-0420



## BONDABLE TUBE HOLDER

DB05-0423



## POSITIVE POSITIONER

For precise placement of posterior direct bond attachments. Lightweight design, spring release action.

DB05-0323



## COLLEGE TWEEZERS

DB05-0319



## CEMENT SPATULA

Multifunctional orthodontic hand instrument with precision manufactured tip.

DB05-0325



## OVERBITE RULER

Aluminium ruler for easy measuring of overbite.

DB05-0001



## PEDO CURVED SCISSORS

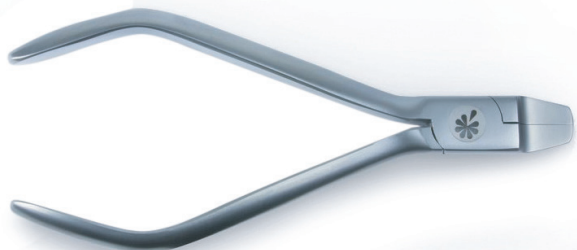
DB05-0331



## ARCH FORMER - Tweed Style

Will bend wires up to .022" x .028".

DB05-0712



# INSTRUMENTS

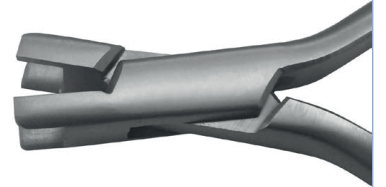
## SPECTRUM STEP PLIER

800-276 (1mm)  
800-277 (3/4mm)  
800-278 (1/2mm)



## SPECTRUM TORQUING PLIER SET w/Wide Key

800-130  
800-131  
replacement key



## SWIVEL HEAD BRACKET Height Gauge

800-068



## BOONE BRACKET Gauge

800-034



## LARGE MOUTH MIRROR

800-050



## BAND SEATER/BITE STICK

autoclavable and cold sterilization

800-0182



## DOUBLE ENDED ELASTIC REMOVER

800-069



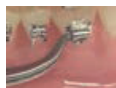
## CINCH BACK / DISTAL BENDER

800-075



## REVERSE ACTION KEAT MOLAR TUBE PLACER

800-039L



## 5-IN-1 BRACKET PLACER & ALIGNER

800-041



# INSTRUMENTS

## SHORTY TWIST HOLDER

800-133



## LITE DOUBLE ENDED LIGATURE DIRECTOR

800-062 (1/4")  
800-062W (3/8")



## LITE BAND PUSHER / SCALER

(3/8") 800-064W



## LITE LIGATURE REMOVER / DIRECTOR

(1/4") 800-065 / (3/8") 800-065W



## MATHIEU NEEDLE HOLDER w/Safety Latch-Regular Tip

A wider serrated tip to hold ligature wire and Kobyashi Hooks firmly during placement.

800-122



## MATHIEU NEEDLE HOLDER w/Safety Latch-Fine Tip

A finer serrated tip to securely place elastic ligature and wires.

800-120



## MATHIEU NEEDLE HOLDER w/Safety Latch-Ultra Fine Tip

This ultra-fine tip is designed specifically to place elastic ligatures securely and more easily by taking up less of the donut.

800-121



# INSTRUMENTS

## BRACKETIZER Blue Handle

800-076



50-2030-0000

For Experience metal/rhodium



50-0032-0000

For Experience Mini metal/rhodium



50-0030-0000

For Experience metal/ceramic  
and rhodium



## HORIZONTAL PLIER RACK w/ Cover (12 Pliers)

700-074



## UPRIGHT PLIER RACK w/Cover (12 pliers)

700-071



## OIL PEN van Carl Martin

990



## PLIER CAROUSEL w/ Center Tube

700-075



## SILICONE COLOR CODED INSTRUMENT RINGS

(80)

700-050



