



**Aligner Supplies & Burs /
Produits pour Aligneurs
& Fraises**



STRIPPING

DENTASONIC DSPK-2



- with more items**
 + 8 Strip
 + 2 Debonding polishers
 + Stery Strip Holder
 + 2 CombiStrip
 + 1 BioMin Remineralization toothpaste

Silent hand piece, no vibration.
Internal water cooling and interchangeable head

DENTASONIC CORDLESS IPR-EVO MOTOR

IPR-EVO1



REFILL DENTASONIC STRIPS

	DIASTRIP		Double Sided		Single Sided		
	DiaStrip 5 pcs	0.10 mm, 15 micron	DSM-01-5	DSM-01R-5	Right	DSM-01L-5	Left
	DiaStrip 5 pcs	0.20 mm, 25 micron	DSM-02-5	DSM-02R-5	Right	DSM-02L-5	Left
	DiaStrip 5 pcs	0.30 mm, 40 micron	DSM-03-5	DSM-03R-5	Right	DSM-03L-5	Left
	DiaStrip 5 pcs	0.40 mm, 60 micron	DSM-04-5	-	Right	-	Left
	DiaStrip 5 pcs	0.50 mm, 60 micron reduction	DSM-05-5	-	Right	-	Left
	Diamant on resin	0.40 mm, 60 micron reduction	RDS-04-5	-	Right	-	Left

	DIASTRIP SAW & DIAMOND		Double Sided
	DiaSaw 5 pcs	0.10 mm, 15 micron	DSS-01-5
	DiaSaw 5 pcs	0.20 mm, 25 micron	DSS-02-5

	POLISTRIP		Double Sided
	PoliStrip 12 pcs	0.10mm (ultra fine)	RPS-9
	PoliStrip 12 pcs	0.15mm (fine)	RPS-15

ALIGNER DIASTRIP SET

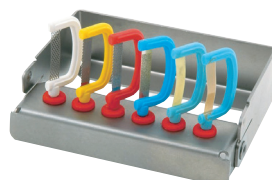
DSA-S5 - 5pcs

- 1x 0.1 mm - 1x 0.15 mm
- 1x 0.2 mm - 2x PoliStrip



DENTASONIC STERYSTRIP

ST-6 Stainless Steel Strip Holder for 6 strips or burs (empty)



DENTASONIC SS MEASURING GAUGE

MG-6 6 thicknesses (0.1mm, 0.15mm, 0.2mm, 0.3mm, 0.4mm, 0.5mm)













STRIPPING

AIRO STRIPS

An innovative interproximal reduction system that makes interproximal enamel removal safer and more accurate without creating sharp corners or subgingival ledges. Designed for use with all orthodontic treatments, these strips curve and flex along the natural contours of the teeth to avoid cutting lips and gums, to prevent excessive enamel removal, and to maximise patient comfort.

- Stainless steel strips with high quality diamond powder
- Medical grade plastic casing
- Single-handed, ergonomic design reduces hand fatigue
- Effective for anterior teeth and easy access to posterior areas
- User and patient friendly
- Autoclavable up to 140°C (steam heat only)



	Yellow IPR 0.06mm Single-Sided, Extra-Fine Diamond Serrated. Sold in pack of 8.	DB05-0900
	Red IPR 0.12mm Double-Sided Medium Diamond. Sold in pack of 8.	DB05-0901
	Dark Blue IPR 0.15mm Double-Sided Coarse Diamond. Sold in pack of 8.	DB05-0902
	Green IPR 0.20mm Double-Sided Coarse Diamond. Sold in pack of 8.	DB05-0903
	Clear IPR 0.10mm Single-Sided Medium-Fine Diamond, Serrated. Sold in pack of 8.	DB05-0904
	Cyan IPR 0.12mm Single-Sided Medium-Coarse. Diamond. Sold in pack of 8.	DB05-0905
	Purple IPR 0.25mm Double-Sided Coarse Diamond. Sold in pack of 8.	DB05-0906
	Brown IPR 0.30mm Double-Sided Coarse Diamond. Sold in pack of 8.	DB05-0907
	Intro pack (1 of each colour). Sold in pack of 8.	DB05-0908
	Incremental Thickness Gauge (Set of 6) Stainless Steel - 0.1, 0.2, 0.25, 0.3, 0.4, 0.5mm. Sold individually.	DB05-0915

STRIPPING

INTERPROXIMAL DIAMOND BUR

8392.314.016
Diamond Bur FG
Pack of 5 pcs



DIAMOND BUR

852.204.037
Contre-Angle/Hoekstuk
Pack of 5 pcs



8833.314.031 Diamond bur FG
8833/031 - Pack of 5 pcs
Friction grip

KOMET BUR



Diamond bur RA
Pack of 5 pcs
801.204.023
801.204.029
801.204.035

STRIPPING DISC CFR. ZACHRISSON

8934A.900.100 10mm diamond disc
8934A.900.140 14mm diamond disc
8934A.900.180 18mm diamond disc
8934A.900.220 22mm diamond disc

Pack of 1 pc



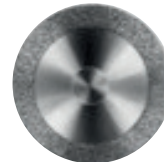
**Mandrel for Zachrisson
disc**
303.204.050

Pack of 6 pcs

DIAMOND STRIPPING DISC DOUBLE-SIDED

911H.204.140 Medium Grain Double Sided - 14 mm diam
911H.204.180 Medium Grain Double Sided - 18 mm diam

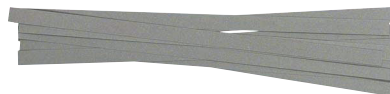
Pack of 1 pc



HORICO STRIPS

DB05-0324B Enamel Stripper Blade 4mm Double Sided
DB05-0324S Enamel Stripper Blade 4mm Single Sided
DB05-0328D Enamel Stripper Blade 6mm Double Sided
DB05-0328S Enamel Stripper Blade 6mm Single Sided

Pack of 12 pcs



DIAMOND STRIP SINGLE SIDED

WS25 Medium 45µm (blue)
WS25F Fine 30µm (red)
WS25EF Extra-Fine 15µm (yellow)
WS25A Starterkit 5 strips/type



ALIGNER SUPPLIES

GC EXAFLEX PUTTY & EXAMIX NDS



GC IMPRESSION SEPARATION WAFER



AFDRUK in 1 fase

- Breng de Exaflex putty in de geperforeerde afdruklepel
- Maak een gleuf en injecteer de Examix NDS

AFDRUK in 2 fase

- Breng de Exaflex putty in de geperforeerde afdruklepel
- Plaats een Separation wafer op de putty en neem de afdruk
- Verwijder de Separation wafer na de afdruk genomen te hebben
- Injecteer de Examix NDS en neem opnieuw een afdruk

Pakket

- Putty1-1pak (500g lichtblauwe basis + 500g gele katalysator), **138801**
- Examix NDS Injection, pak van 2 cartridges + mengnaalden, **1000502**
- Cartridgedispenser, **800006**
- Separation Wafers 30 pcs, **800099**

EMPREINTE en une phase

- Mettez l'Exaflex Putty dans un porte-empreinte perforé
- Créez une fente et injectez l'Examix NDS

EMPREINTE en deux phases

- Insérer le mastic Exaflex dans le porte-empreinte perforé
- Placez une feuille d'espace sur le mastic et prenez l'empreinte.
- Retirer la feuille d'espaceur après l'empreinte
- Injecter l'Examix NDS et reprendre une empreinte.

Paquet

- Putty1-1 (base bleue 500 g & catalyseurjaune500 g), **138801**
- Examix NDS Injection, coffret de 2 cartouches + embouts mélangeurs, **1000502**
- Cartridge Dispenser (distributeur de cartouche), **800006**
- Separation Wafers 30 pcs, **800099**

ALIGNER SUPPLIES

ORTHO EASE CHEWIES

DB04-4231

Aligner Chewies
plain unscented (2 x 10 pcs)

DB04-4230

Aligner Chewies
Mint (2 x 10 pcs)



ORTHO EASE RETRIEVERS

DB04-4220 - 10 pcs



ALIGNER REMOVERS

700-640 - 12 pcs



TOMAS® ALIGNER HOOK

UL/LR: **302-021-00**

UR/LL: **302-021-10**

Each pack contains 10 pcs



POWER ARMS

Right **L4783**

Left **L4784**

Each pack contains 10 pcs



IXION ALIGNER PLIER



Aligner Kit **IX886**

this kit contains

- IX887 Torque plier
- IX888 Rotation plier
- IX889 Retention plier
- IX891 Hole Punch plier
- IX890 Tear Drop plier

Meer informatie over de Aligner instrumenten in het hoofdstuk instrumenten.

Plus d'informations dans le chapitre des instruments.

ALIGNER SUPPLIES

GC ALIGNER CONNECT™

Specifically formulated for aligner attachments

Als eerste in de industrie is GC Aligner Connect speciaal ontwikkeld voor orthodontische aligner attachments. GC Aligner Connect biedt een verbeterde esthetiek, imiteert de glazuur kleurschakeringen van de tand en heeft een hoge duurzaamheid, die slijtage op lange termijn of mogelijke loslating beperkt tijdens de behandeling. Kan gebruikt worden in combinatie met de G-premio Bond, Ortho Solo of Assure.

90-4100-0000 GC Aligner connect - 1 syringe 3,4g with 20 tips

Composite développé pour les traitements par gouttières

La résine composite généralement utilisée pour créer des taquets ne répond pas aux impératifs des traitements par gouttières d'alignement. Aucune résine existante sur le marché n'a spécialement été créée pour cette application. GC Aligner Connect a été développé dans ce sens, afin d'apporter une réponse esthétique par mimétisme de la teinte de la dent et limiter l'usure et les risques de décollement grâce à sa grande résistance. L'adhésion à l'émail se fera par l'intermédiaire d'un agent de collage photopolymérisable (ex: G-premio Bond, Ortho Solo, Assure, etc...). Suivre les instructions de l'agent de collage.

90-4100-0000 GC Aligner connect - 1 syringe 3,4g with 20 tips



PERFECT-A-SMILE

Perfect-a-Smile, een pontic verf voor aligners

Is een licht uithardende pasta in 3 tinten die op elk type aligner kan worden aangebracht om een ruimte of een ontbrekende tand te maskeren.

Perfect-a-Smile, une peinture pontique pour les gouttières.

Une pâte photopolymérisable en 3 teintes qui peut être appliquée sur tout type de gouttière pour masquer un espace ou une dent manquante.



600-418
Shade A2 - 4gm
600-418D
Shade A3.5 - 4gm
600-419
Shade B1 - 4gm

CERAMIC BUTTONS

FCB-00-01- 10 pcs



CERAMIC HOOKS

FCB-00-01HK- 10 pcs



COMPOSITE BUTTONS

270-204- 10 pcs



MINI-MOLD SYSTEM

700-100M+ Starterkit

Kit includes: 24 Mini-Mold tips (3 of each style),
2 tip handles, detailed step-by-step instructions.



Bite Ramp
700-117 3mm
8 tips, 1 handle
700-117L 5mm
8 tips, 1 handle



Button
700-004
10 tips,
1 handle



Habit Control
700-116
10 tips,
1 handle



Molar Pad
700-007
10 tips,
1 handle

DEBONDING BURS

TUNGSTEN CARBIDE BURS

Flame shaped - for removing bonding
Pack of 5 pcs



	
Friction Grip/Turbine	Contre-Angle/Hoekstuk
H282K-314-014	H282K-204-014

TUNGSTEN CARBIDE BURS

Ball shape - for removing bonding
Pack of 5 pcs



	
Friction Grip/Turbine	Contre-Angle/Hoekstuk
H379-314-018 H379-314-023	H379-204-018 H379-204-023

DIAMOND BURS

Friction Grip/Turbine **909.314.040**
Contre-angle/Hoekstuk **909.204.040**
Pack of 5 pcs



MEISINGER POLISHER FLAME

Ceramic Abrasive
Contre-Angle/Hoekstuk **655.204.288**
Pack of 5 pcs



DEBONDING POLISHER

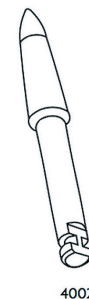
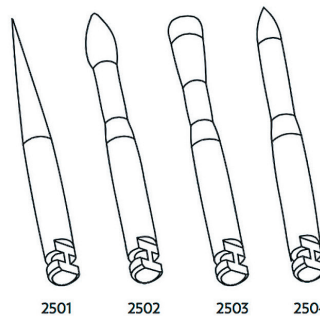
Contre-Angle/Hoekstuk
DB-R20 Dentasonic Refill Cup - 6 pcs
DB-R21 Dentasonic Refill Point - 6 pcs



STAINBUSTER

STANDARD: LENGTH 25 MM

JUMBO: LARGE HEAD



10003763 Stainbusters Standard RA-2502
10004211 Stainbusters Standard RA-2501
10004747 Stainbusters Standard RA-2503
10004748 Stainbusters Standard RA-2504
Pack of 6 pcs

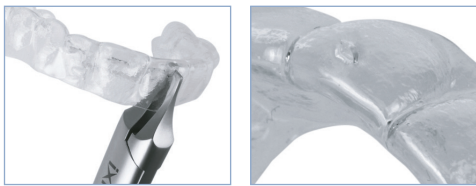
10000646
Stainbuster Jumbo RA-4002

ALIGNER PLIERS

IX887

The Torque Aligner Plier

The IX887 creates a horizontal indentation (0.75 x 1.5mm), creating a force point for individual lingual or labial root torque.



IX892

Ixion Aligner Scissors

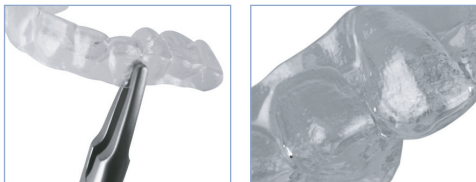
These lightweight scissors are used for removing excess thermoformed material, and for the smooth trimming and shaping of aligners. Their streamline design, graduated curve and tapered beak makes for easy use - even in tight areas.



IX889

The Retention Aligner Plier

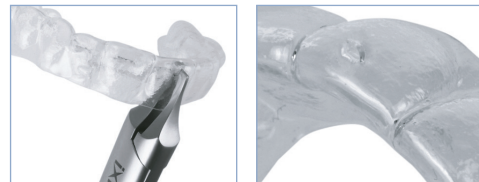
to create a circular indentation (1mm).



IX888

The Rotation Aligner Plier

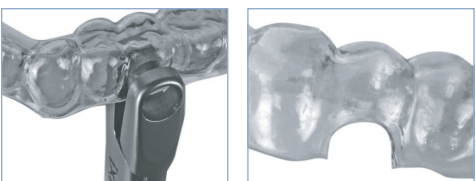
The IX888 creates a vertical indentation / force point (0.75 x 1.5mm) on the tooth surface to optimise tooth rotation.



IX891

The Hole Punch Plier

Creates a half-circle cut-out in the aligner to give clearance for bonded buttons, tubes or brackets with hooks for elastics.



IX890

The Tear Drop Plier

Create a cut at the gingival margin, anywhere along the arch - buccally, labially or lingually - to conveniently hold elastics in place while the aligner is placed in the mouth.

