

**Clear X &
intra-oral scanner**



Shape-shifting aligner

1 aligner = 2

CLEAR X

THE EVOLUTION IN TEETH-ALIGNMENT



* Including MotionViewer Premium Plus Video Treatment Plan!

Unlimited modifications



TOUCH

0 3 6 12 12+

Under 3 months treatment for correction of a small number of malocclusions and minor relapses from previous orthodontic treatments.

Single and double arches
1 free refinement
Upper and lower retainers
Straight cut trimline
Template and laser mark
Remake upon request
Includes booster and app
1 aligner = 2 weeks



SMART

0 3 6 12 12+

Between 3 and up to 6 months treatment for correction of a small number of conditions and minor malocclusions.

Single and double arches
2 free refinements
Upper and lower retainers
Straight cut trimline
Template and laser mark
Remake upon request
Includes booster and app
1 aligner = 2 weeks



POWER

0 3 6 12 12+

Between 6 and up to 12 months treatment for mild cases with correction of a moderate number of conditions.

Single and double arches
3 free refinements
Upper and lower retainers
Straight cut trimline
Template and laser mark
Remake upon request
Includes booster and app
1 aligner = 2 weeks



INFINITY

0 3 6 12 12+

Over 12 months treatment for moderate to complex cases, with unlimited aligners for a period of 5 years or 180 days after ordering the end-of-treatment retainers.

Single and double arches
Unlimited refinements
Upper and lower retainers
Straight cut trimline
Template and laser mark
Remake upon request
Includes booster and app
1 aligner = 2 weeks



Portable Dental 3D Digital Intraoral Scanner Color Scanning 3D High Resolution



- Ergonomische afmetingen en gewicht. Scanner afmeting 240mm(L) x39.8mm(B)x 57mm(H).
- Gewicht 350g, afmeting scannertip 18.5mm(H)x19mm(W). Geschikt voor zowel kinderen als volwassen patiënten
- Poedervrij
- Chromoscan, Gekleurde scans die de ware tandheelkundige situatie in vivo en in real-time weergeeft
- Zeer nauwkeurig en snel scannen ongeveer ≤ 3 minuten
- Afneembare scannertip autoclaveerbaar tussen 121°C en 134°C
- Analyse van occlusierelaties
- Open en progressief systeem
- Gratis updates
- Geen jaarlijkse fee, enkel eenmalige aankoopprijs
- Compatibel met Clear X en andere aligner systemen

- Dimensions et poids ergonomiques, 240mm(L)x39.8mm(W) x57mm(H), Poids 350g, taille embout du scanner 18.5mm(H)x19mm(W)
- Convient aux enfants et aux adultes
- Sans poudre
- Chromoscan Scans colorés représentant la véritable situation dentaire en vivo et en temps réel
- Numérisation très précise et rapide environ ≤ 3 minutes.
- Embout amovible du scanner, autoclavable entre 121°C et 134°C
- Analyse des relations d'occlusion
- Système ouvert et progressif
- Mises à jour gratuites
- Pas de frais annuels, seulement un prix d'achat unique
- Compatible avec Clear X et d'autres systèmes d'alignement.

Toepassingen voor verschillende tandheelkundige behandelingen Restauratieve tandheelkunde, Implantologie en Orthodontie

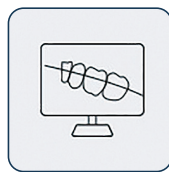
Applications pour différents traitements dentaires Dentisterie restauratrice, Implantologie et Orthodontie



Portable digitalized orthodontics treatment workflow



1. Intraoral data acquisition



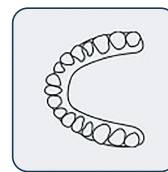
2. Design



3. 3D model printing



4. Compression molding of aligners



5. Completion



6. Try-on

