



## Instrumenten/ Instruments



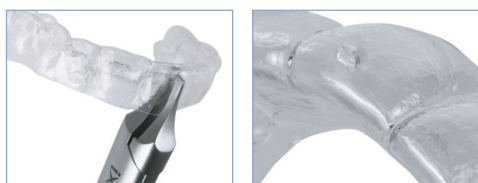
**B-DENTAL**  
ORTHODONTIC SUPPLIES

# ALIGNER PLIERS

## IX887

### The Torque Aligner Plier

The IX887 creates a horizontal indentation (0.75 x 1.5mm), creating a force point for individual lingual or labial root torque.



## IX892

### Ixion Aligner Scissors

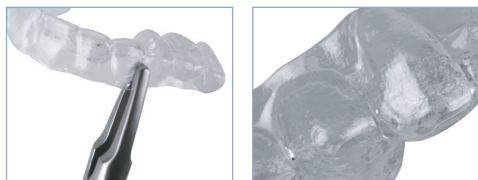
These lightweight scissors are used for removing excess thermoformed material, and for the smooth trimming and shaping of aligners. Their streamline design, graduated curve and tapered beak makes for easy use - even in tight areas.



## IX889

### The Retention Aligner Plier

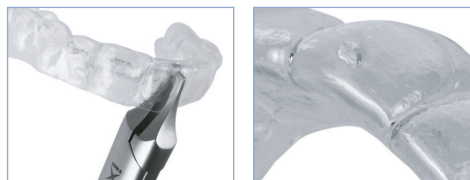
to create a circular indentation (1mm).



## IX888

### The Rotation Aligner Plier

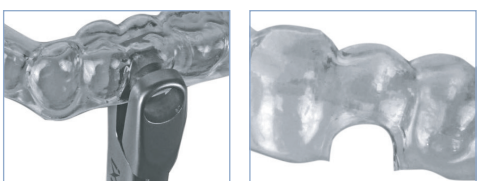
The IX888 creates a vertical indentation / force point (0.75 x 1.5mm) on the tooth surface to optimise tooth rotation.



## IX891

### The Hole Punch Plier

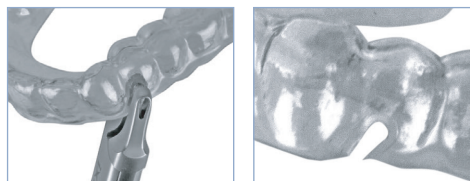
Creates a half-circle cut-out in the aligner to give clearance for bonded buttons, tubes or brackets with hooks for elastics.



## IX890

### The Tear Drop Plier

Create a cut at the gingival margin, anywhere along the arch - buccally, labially or lingually - to conveniently hold elastics in place while the aligner is placed in the mouth.



# LINGUAL SERIES



## IX949

### Slim Tweed Plier

This instrument has slimmer tips - just 0.9mm



## IX950

### Weingart 60° Angle

Maximum .018" (.46mm) wire.



## IX952

### Stepped Tweed Arch Plier

Designed for torquing and bending both square and rectangular wires.



## IX953

### Cinch Back

The serrated tips of this instrument hold the wire securely while bending the wire 90° distal to the buccal tube.

For use with Nickel Titanium wires .012" - .018" (.30 x .46mm).



## IX954

### Cinch Back - Large Wire

Same features as ix953 but designed to work with larger wires.

For use with wires from .016" (.41mm) up to .021" x .025" (.55 x .64mm).



## IX955

### Bracket Removing Plier



## IX956

### Mini Ligature Cutter 50° Angle Upper

Maximum Cutting Capacity, soft wire up to .012" (.30mm)



## IX956s

### Micro Ligature Cutter Upper 50° Angle Upper

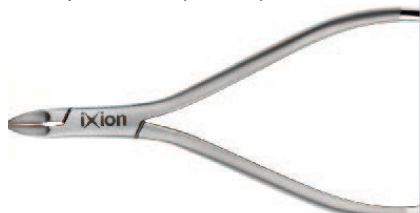
Maximum Cutting Capacity, soft wire up to .012" (.30mm)



## IX911

### Micro Ligature Cutter

Maximum Cutting Capacity: soft wire up to .012" (.30mm)



## IX911L

### Micro Long Handled Ligature Cutter

Maximum Cutting Capacity: soft wire up to .012" (.30mm)



## IX958 / IX958S

### Flush Cut Distal End Cutter

Standard / Small

Minimum Cutting Capacity:

ix958 - .016" - ix958s .012"

Maximum Cutting Capacity:

ix958 archwires up to .021" x .025"

ix958s archwires up to .016" x .025"



## IX959

### Long Handled Distal End Cutter

With T.C. inserts.

Minimum Cutting Capacity: .012"

Maximum Cutting Capacity:

.018"x.025"



## IX632

### Lingual Bracket and Bondable Tube Holder



## IX941

### Curved Lingual Micro Mosquito



## IX940

### Curved Smaha

excellent for placing elastomerics to brackets





# CUTTERS

## IX900

### Distal End Cutter

Cutting Capacity: archwires up to .021" x .025"



## IX900s

### Distal End Cutter

Allows you to routinely cut beta titanium, braided and co-axial wires with ease. Cutting Capacity: archwires up to .016" x .022"



## IX901

### Long Handled Distal End Cutter

Cutting Capacity: archwires up to .021" x .025"



## IX905

### Hard Wire Cutter

Minimum Cutting Capacity: .012"  
Maximum Cutting Capacity: archwires up to .021" x .025"



## IX902 / IX902s

### Flush Cut Distal End Cutter Standard / Small

#### IX902

Minimum Cutting Capacity: .016"  
Maximum Cutting Capacity: archwires up to .021" x .025"

#### IX902s

Minimum Cutting Capacity: .012"  
Maximum Cutting Capacity: archwires up to .016" x .025"



Using none flush cut distal end



Using flush cut distal end



**ixion**<sup>™</sup>  
Instruments

## CUTTERS

### IX915

#### Hard Wire Cutter with T.C. Inserts

Minimum Cutting Capacity: .012"  
Maximum Cutting Capacity:  
archwires up to .021"x .025"



### IX906

#### Hard Wire Cutter 15° Angle

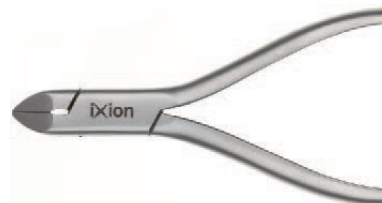
Minimum Cutting Capacity: .012"  
Maximum Cutting Capacity:  
archwires up to .021"x .025"



### IX916

#### Hard Wire Cutter 15° Angle with T.C. Inserts

Minimum Cutting Capacity: .012"  
Maximum Cutting Capacity:  
archwires up to .021"x .025"



### IX908

#### Heavy Duty Hard Wire Cutter

Minimum Cutting Capacity: .014"  
(.36mm)  
Maximum Cutting Capacity: wire  
up to .060" (1.5mm)



### IX910

#### Pin Ligature Cutter 7° Angle

Maximum Cutting Capacity: soft  
wire up to .016"



### IX911

#### Micro Ligature Cutter

The inserted tips ensure precision  
cutting of ligature wire and elas-  
tics. Maximum Cutting Capacity:  
soft wire up to .012"



### IX911L

#### Micro Long Handled Ligature Cutter

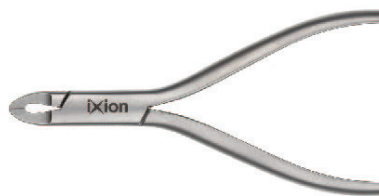
Maximum Cutting Capacity: soft  
wire up to .012"



### IX912

#### Standard Ligature Cutter

Maximum Cutting Capacity: soft  
wire up to .015"



### IX913

#### Standard Soft Wire Ligature Cutter

Maximum Cutting Capacity: soft  
wire up to .012"



# UTILITY PLIERS

## IX800

### Small Weingart

Holds round, square and rectangular wires up to .022" x .028



## IX801

### Small Weingart with T.C.

Inserted T.C. tips providing maximum wire control. Holds round, square and rectangular wires up to .022" x .028"



## IX802

### Large Weingart

Holds wire up to .030"



## IX803

### Large Weingart with T.C.

Holds wire up to .030"



## IX804

### Fine Tipped Weingart

Holds wire up to .022" x .028"



## IX843

### Utility Weingart with Inserted Tips

Holds wire up to .022"x .028"



## IX805

### How Plier (Straight)

Holds wire up to .022" x .028"



## IX806

### How Plier (Angled)

Holds wire up to .022" x .028"



## IX820

### Crimpable Archwire Hook Plier



## IX834

### Crimping Plier



## IX825

### Posterior Band Remover (Short)

Replacement Tips 3/16" (5mm) - IX895S

Replacement Tips 1/8" (4mm) - IX896S



## UTILITY PLIERS

### IX826

#### Posterior Band Remover (Long)

Replacement Tips 3/16" (5mm) - IX895S  
Replacement Tips 1/8" (4mm) - IX896S



### IX838

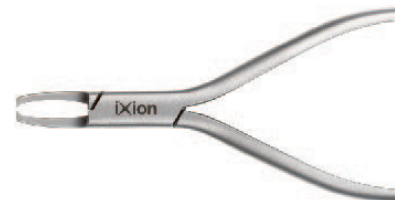
#### Posterior Band Remover Plier

Replacement Tips. Pack of 10.



### IX827

#### Direct Bond Remover (Straight)



### IX828

#### Direct Bond Remover (Angled 60°)



### IX829

#### Direct Bond Remover



### IX840

#### Small Adams Plier

Effective for wires up to .030"



### IX841

#### Force Module Separator



### IX895S

#### Replacement Tips 3/16" (5mm)

for IX825/826, Pk 3



### IX896S

#### Replacement Tips 1/8" (4mm)

for IX825/826, Pk 3



### IX838S

#### Posterior band remover tips

for IX838 Posterior Band Remover

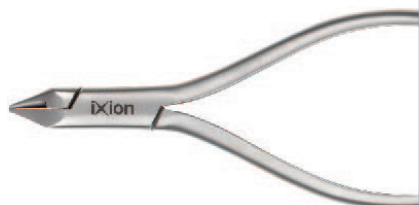


# WIRE BENDING PLIERS

## IX807

### Light Wire Plier

Tips bend archwires from .012" to .020".



## IX809

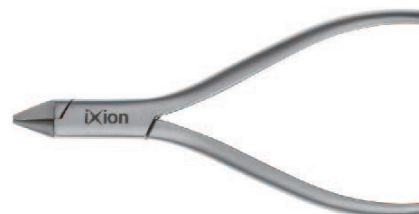
### Light Wire Plier with Cutter

Tips bend archwires from .012" to .020".  
Cutter at the base of beaks cuts archwires from .014" to .020".



## IX810

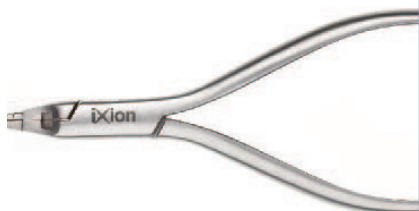
### Bird Beak Plier



## IX812

### Tweed Loop Forming Plier with Cutter

The tip has three sections of 1.2mm, 1.8mm and 2.0mm.  
For use with round and square wire up to .021 x .025".  
The built in cutter allows wire to be cut from .014" to .020".



## IX813

### Tweed Arch Forming Plier

For use with wires up to .021" x .025".



## IX821

### Long Beak Light Wire Plier

For use with round and square wire up to .020" (.51mm).





# WIRE BENDING PLIERS

## IX872

**Bird Beak Plier with T.C.**



## IX873

**Torquing Plier Set**



## IX819

**Small 3-Jaw Plier**  
For working with wire up to .020".



## IX814

**O'Brien Loop Forming Plier**  
The perfect plier for making Accurate, Omega and Closing loops. Can be used with round & square wire up to .021" x .025" (.55 x .64mm).



## IX815

**Nance Plier**  
Precision loop forming with four step tips 3mm, 4mm, 5mm and 6mm. Excellent for round and square wires up to .022".



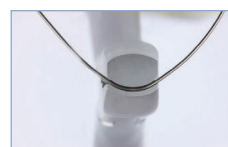
## IX816

**3-Jaw Plier**  
For use with wire up to .030".



## IX817

**De La Rosa**  
For use with wires up to .021" x .025".

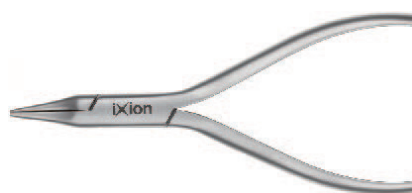




# WIRE BENDING PLIERS

## **IX830**

### **Hollow Chop**



## **IX975**

### **Intra Oral Detailing Plier 0.75mm Step**

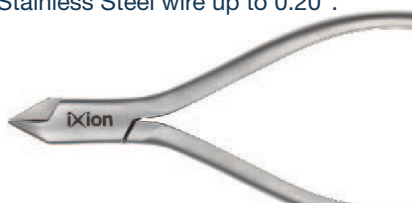
For use up to max .018" x.018" wire.



## **IX823**

### **Fine 3-Jaw Plier**

Can be used on Nickel Titanium and  
Stainless Steel wire up to 0.20".



## **IX976**

### **Intra Oral Detailing Plier 0.5mm Step**

For use up to max  
.018" x.018" wire.



# HAND INSTRUMENTS & HEMOSTATS



**IX650**

Probe Single Ended



**IX651**

Probe Double Ended



**IX652**

Ligature Tucker



**IX653**

Mitchell Trimmer



**IX656**

Cement Spatula



**IX657**

Flat Plastic



**IX654**

Mirror Handle



**IX655**

Mirror Heads Pk 12

# HAND INSTRUMENTS & HEMOSTATS

## IX850

**Direct Bond Bracket Holder**



## IX630

**Direct Bond Holder with Positioning Blade**



## IX631

**Deluxe Direct Bond Holder**



## IX632

**Lingual Bracket and Bondable Tube Placer**



## IX633

**Curved Bracket Holder**



## IX845

**Mershon Band Pusher**



## IX861

**Mathieu Needle Holder with T.C.**  
Designed for twisting  
ligature wire.



## IX862

**Mathieu Needle Holder**  
Designed for twisting  
ligature wire.



## IX863

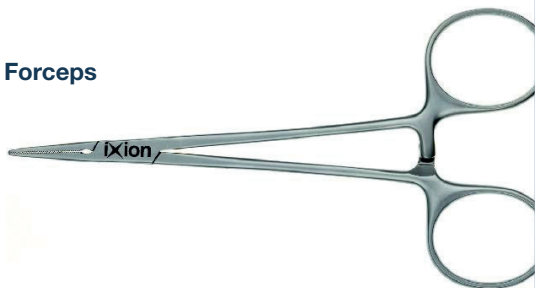
**Smaha (Straight)**  
Fine tips excellent for placing  
elastomeric ligatures.



# HAND INSTRUMENTS & HEMOSTATS

## IX855

### Mosquito Forceps



## IX860

### Fine Tip Mathieu Needle Holder



## IX940

### Curved Smaha

Excellent for placing elastomerics to lingual brackets.



## IX941

### Curved Lingual Micro Mosquito

Used to place elastic ligatures.



## IX866

### Bracket Height Gauge

3.5mm-5mm .018

For precise bracket positioning of .018 brackets.



## IX867

### Bracket Height Gauge

3.5mm-5mm .022

For precise bracket positioning of .022 brackets.



# HAND INSTRUMENTS & HEMOSTATS

## IX892

**Ixion Aligner Scissors**



## IX101

**Small Rack**  
Autoclavable  
Stainless Steel Rack  
size L 110mm x H 120mm



## IX103

**Large Rack** Autoclavable Stainless Steel Rack  
size L 310mm x H 125mm



## IX102

**Medium Rack**  
Autoclavable  
Stainless Steel Rack  
size L 155mm x H 120mm



## DB04-000/1

**Clear Upright Instrument Rack**  
Keep your instruments organised  
will hold up to 15 instruments



# LABORATORY PLIERS

## IX164

### Adams Plier

Bends hard wire up to .039" (1.00mm) max.



## IX165

### Spring Former Plier

With tungsten Carbide inserted tips.  
Bends hard wire up to 0.28" (0.7mm) max.



## IX700

### Universal General Use Plier

Both Tips are serrated. Bends hardwire up to .039" (1.0mm) max. Cuts hardwire up to .028" (0.7mm) max.



## IX702

### Three Jaw Plier

For hard wire up to .024" (1mm) max.



## IX703

### Young Plier

For labial arches and canine loops.  
For hard wire up to .028" (0.7mm) max.



## IX705

### Lingual Arch Bending Plier

Grooved to hold all larger wire sizes, jaw width is .120" (3.05mm). Also ideal for double and triple back bends. Bends round, square and rectangular wires up to .036" (0.91mm) max.



## IX708

### Optical Plier

For hardwire up to .028" (0.7mm) max.



## IX711

### Heavy Duty Bird Beak

Bending of wire up to .040" 1mm.





# INSTRUMENTS

## BRACKET DELUXE HOLDER

DB05-0421



## STANDARD BRACKET HOLDER

DB05-0420



## BONDABLE TUBE HOLDER

DB05-0423



## CEMENT SPATULA

Multifunctional orthodontic hand instrument with precision manufactured tip.

DB05-0325



## COLLEGE TWEEZERS

DB05-0319



## PEDO CURVED SCISSORS

DB05-0331



## OVERBITE RULER

Aluminium ruler for easy measuring of overbite.

DB05-0001



## ARCH FORMER - Tweed Style

Will bend wires up to .022" x .028".

DB05-0712



## DOUBLE ENDED PROBE

DB05-0312



# INSTRUMENTS

## SPECTRUM STEP PLIER

800-276 (1mm)  
800-277 (3/4mm)  
800-278 (1/2mm)



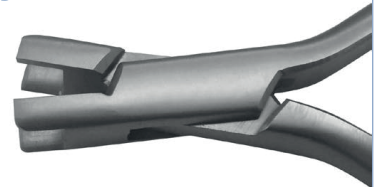
## SWIVEL HEAD BRACKET Height Gauge

800-068



## SPECTRUM TORQUING PLIER SET w/Wide Key

800-130  
800-131  
replacement key



## LARGE MOUTH MIRROR

800-050 38,10mm



## BOONE BRACKET Gauge

800-034



## DOUBLE ENDED ELASTIC REMOVER

800-069



## BAND SEATER/BITE STICK

autoclavable and cold sterilization

800-0182



## REVERSE ACTION KEAT MOLAR TUBE PLACER

800-039L



## CINCH BACK / DISTAL BENDER

800-075



## BRACKET POSITIONER

800-046



## 5-IN-1 BRACKET PLACER & ALIGNER

800-041



# INSTRUMENTS

## SHORTY TWIST HOLDER

800-133



## LITE DOUBLE ENDED LIGATURE DIRECTOR

800-062 (1/4")  
800-062W (3/8")



## LITE BAND PUSHER / SCALER

(3/8") 800-064W



## LITE LIGATURE REMOVER / DIRECTOR

(1/4") 800-065 / (3/8") 800-065W



## MATHIEU NEEDLE HOLDER w/Safety Latch-Regular Tip

A wider serrated tip to hold ligature wire and Kobyashi Hooks firmly during placement.

800-122



## MATHIEU NEEDLE HOLDER w/Safety Latch-Fine Tip

A finer serrated tip to securely place elastic ligature and wires.

800-120



## MATHIEU NEEDLE HOLDER w/Safety Latch-Ultra Fine Tip

This ultra-fine tip is designed specifically to place elastic ligatures securely and more easily by taking up less of the donut.

800-121



# INSTRUMENTS

## BRACKETIZER Blue Handle

800-076



50-2030-0000

For Experience metal/rhodium



50-0032-0000

For Experience Mini metal/rhodium



DB05-0311

Double ended tucker



LM411-415ES

LM Ligature Director

50-0030-0000

For Experience metal/ceramic  
and rhodium



## HORIZONTAL PLIER RACK w/ Cover (12 Pliers)

700-074



## UPRIGHT PLIER RACK w/Cover (12 pliers)

700-071



## OIL PEN van Carl Martin

990



## PLIER CAROUSEL w/ Center Tube

700-075



## SILICONE COLOR CODED INSTRUMENT RINGS

(80)

700-050





