



**Metalen/Métalliques**  
BRACKETS



# LEGEND mini Type Roth\*



## LEGEND mini Type Roth MAXILLARY

Tooth	I/O mm	Torque	Angulation	Rotation	P/N			
					.018"		.022"	
					R	L	R	L
U 1	.25	12°	5°	0°	31-1110-0010	31-1210-0010	31-2110-0010	31-2210-0010
U 2	.78	8°	9°	0°	31-1120-0010	31-1220-0010	31-2120-0010	31-2220-0010
U 2/Hk	.78	8°	9°	0°	31-112D-0010	31-122D-0010	31-212D-0010	31-222D-0010
U 3	.25	2°	10°	4°m	31-1130-0010	31-1230-0010	31-2130-0010	31-2230-0010
U 3/Hk	.25	2°	10°	4°m	31-113D-0010	31-123D-0010	31-213D-0010	31-223D-0010
U 4	.37	-7°	0°	2°d	31-1140-0010	31-1240-0010	31-2140-0010	31-2240-0010
U 4/Hk	.37	-7°	0°	2°d	31-114M-0010	31-124M-0010	31-214M-0010	31-224M-0010
U 4/Hk, Off. Base	.37	-7°	0°	0°	—	—	31-214M-0013	31-224M-0013
U 4-5/Off. Base	.37	-7°	0°	0°	31-1540-0013	31-1540-0013	31-2540-0013	31-2540-0013
U 5	.48	-7°	0°	2°d	31-1150-0010	31-1250-0010	31-2150-0010	31-2250-0010
U 5/Hk	.48	-7°	0°	2°d	31-115M-0010	31-125M-0010	31-215M-0010	31-225M-0010

## MANDIBULAR

Tooth	I/O mm	Torque	Angulation	Rotation	P/N			
					.018"		.022"	
					R	L	R	L
L 1-2	.97	-1°	0°	0°	31-1610-0010	31-1610-0010	31-2610-0010	31-2610-0010
L 3	.25	-11°	7°	2°m	31-1430-0010	31-1330-0010	31-2430-0010	31-2330-0010
L 3/Hk	.25	-11°	7°	2°m	31-143D-0010	31-133D-0010	31-243D-0010	31-233D-0010
L 4	.28	-17°	0°	4°d	31-1440-0010	31-1340-0010	31-2440-0010	31-2340-0010
L 4/Off. Base	.28	-17°	0°	0°	31-1640-0013	31-1640-0013	31-2640-0013	31-2640-0013
L 4/Hk	.28	-17°	0°	4°d	31-144D-0010	31-134D-0010	31-244D-0010	31-234D-0010
L 4/Hk, Off. Base	.28	-17°	0°	0°	31-144D-0013	31-134D-0013	31-244D-0013	31-234D-0013
L 5	.33	-22°	0°	4°d	31-1450-0010	31-1350-0010	31-2450-0010	31-2350-0010
L 5/Off. Base	.33	-22°	0°	0°	31-1650-0013	31-1650-0013	31-2650-0013	31-2650-0013
L 5/Hk	.33	-22°	0°	4°d	31-145D-0010	31-135D-0010	31-245D-0010	31-235D-0010
L 5/Hk, Off. Base	.33	-22°	0°	0°	—	—	31-245D-0013	31-235D-0013

Metalen brackets zijn verpakt per 10 stuks / Les brackets métalliques sont emballés par 10 pcs

GC Orthodontics version of the **MBT™ System** prescription (McLaughlin, Bennet or Trevisi) and is not a copy of existing system. No endorsement by the Drs McLaughlin, Bennett or Trevisi is implied.

GC Orthodontics version of the **Roth System** prescription and is not a copy of existing system. No endorsement by Dr Roth is implied.

GC Orthodontics version of the **Andrews System** prescription and is not a copy of existing system. No endorsement by Dr Andrews is implied.

GC Orthodontics version of the **BiDimensional** prescription and is not a copy of existing system. No endorsement by Dr Gianelly is implied.

GC Orthodontics version of the **Bio-Progressive** prescription and is not a copy of existing system. No endorsement by Dr Ricketts is implied.



# LEGEND mini Type MBT\*



## LEGEND mini Type MBT\* MAXILLARY

Tooth	Torque	Angulation	Rotation	P/N			
				.018"		.022"	
				R	L	R	L
U 1	.25	17°	4°	31-1110-0020	31-1110-0020	31-2110-0020	31-2210-0020
U 2	.78	10°	8°	31-1120-0020	31-1220-0020	31-2120-0020	31-2220-0020
U 3	.25	-7°	8°	31-1130-0020	31-1230-0020	31-2130-0020	31-2230-0020
U 3/Hk	.25	0°	8°	31-113D-0021	31-123D-0021	31-213D-0021	31-223D-0021
U 3/Hk	.25	-7°	8°	31-113D-0020	31-123D-0020	31-213D-0020	31-223D-0020
U 4	.37	-7°	0°	31-1540-0020	31-1540-0020	31-2540-0020	31-2540-0020
U 4/Hk	.37	-7°	0°	31-114D-0020	31-124D-0020	31-214D-0020	31-224D-0020
U 5	.48	-7°	0°	31-1550-0020	31-1550-0020	31-2550-0020	31-2550-0020
U 5/Hk	.48	-7°	0°	31-115D-0020	31-125D-0020	31-215D-0020	31-225D-0020

## MANDIBULAR

Tooth	Torque	Angulation	Rotation	P/N			
				.018"		.022"	
				R	L	R	L
L 1-2	.97	-6°	0°	31-1610-0020	31-1610-0020	31-2610-0020	31-2610-0020
L 1-2/(Optional)	.97	-1°	2°	31-1410-0045	31-1310-0045	—	—
L 3	.25	-6°	3°	31-1430-0020	31-1330-0020	31-2430-0020	31-2330-0020
L 3/Hk	.25	0°	3°	31-143D-0021	31-133D-0021	31-243D-0021	31-233D-0021
L 3/Hk	.25	-6°	3°	31-143D-0020	31-133D-0020	31-243D-0020	31-233D-0020
L 4	.28	-12°	2°	31-1440-0020	31-1340-0020	31-2440-0020	31-2340-0020
L 4/Offset Base	.28	-12°	2°	31-1440-0073	31-1340-0073	31-2440-0073	31-2340-0073
L 4 /Hk/Offset Base	.28	-12°	2°	31-144D-0073	31-134D-0073	31-244D-0073	31-234D-0073
L 4/Hk	.28	-12°	2°	31-144D-0020	31-134D-0020	31-244D-0020	31-234D-0020
L 5	.33	-17°	2°	31-1450-0020	31-1350-0020	31-2450-0020	31-2350-0020
L 5/Offset Base	.33	-17°	2°	31-1450-0073	31-1350-0073	31-2450-0073	31-2350-0073
L 5 /Hk/Offset Base	.33	-17°	2°	31-145D-0073	31-135D-0073	31-245D-0073	31-235D-0073
L 5/Hk	.33	-17°	2°	31-145D-0020	31-135D-0020	31-245D-0020	31-235D-0020

Metalen brackets zijn verpakt per 10 stuks / Les brackets métalliques sont emballés par 10 pcs





# LEGEND mini V-slot Type Roth\*



## LEGEND mini V-Slot Type Roth MAXILLARY

Tooth	I/O mm	Torque	Angulation	Rotation	P/N			
					.018"		.022"	
					R	L	R	L
U 1	.70	12°	5°	0°	31-1110-0034	31-1210-0034	31-2110-0034	31-2210-0034
U 2	.97	8°	9°	0°	31-1120-0034	31-1220-0034	31-2120-0034	31-2220-0034
U 3	.56	-2°	7°	0°	31-1130-0034	31-1230-0034	31-2130-0034	31-2230-0034
U 3/Hk	.56	-2°	7°	0°	31-113D-0034	31-123D-0034	31-213D-0034	31-223D-0034
U 4-5	.56	-7°	0°	0°	31-1540-0034	31-1540-0034	31-2540-0034	31-2540-0034
U 4-5/Off. Base	.56	-7°	0°	0°	31-1540-0035	31-1540-0035	31-2540-0035	31-2540-0035
U 4-5/Hk	.56	-7°	0°	0°	31-114M-0034	31-124M-0034	31-214M-0034	31-224M-0034

## MANDIBULAR

Tooth	I/O mm	Torque	Angulation	Rotation	P/N			
					.018"		.022"	
					R	L	R	L
L 1-2	.97	0°	0°	0°	31-1610-0034	31-1610-0034	31-2610-0034	31-2610-0034
L 3	.56	-5°	7°	0°	31-1430-0034	31-1330-0034	31-2430-0034	31-2330-0034
L 3/Hk	.56	-5°	7°	0°	31-143D-0034	31-133D-0034	31-243D-0034	31-233D-0034
L 4	.56	-11°	0°	0°	31-1640-0034	31-1640-0034	31-2640-0034	31-2640-0034
L 4/Hk	.56	-11°	0°	0°	31-144D-0034	31-134D-0034	31-244D-0034	31-234D-0034
L 4/Off. Base	.56	-11°	0°	0°	31-1640-0035	31-1640-0035	31-2640-0035	31-2640-0035
L 4/Hk, Off. Base	.56	-11°	0°	0°	31-144D-0035	31-134D-0035	31-244D-0035	31-234D-0035
L 5	.56	-17°	0°	0°	31-1650-0034	31-1650-0034	31-2650-0034	31-2650-0034
L 5/Hk	.56	-17°	0°	0°	31-145D-0034	31-135D-0034	31-245D-0034	31-235D-0034
L 5/Off. Base	.56	-17°	0°	0°	31-1650-0035	31-1650-0035	31-2650-0035	31-2650-0035
L 5/Hk, Off. Base	.56	-17°	0°	0°	31-145D-0035	31-135D-0035	31-245D-0035	31-235D-0035

Metalen brackets zijn verpakt per 10 stuks / Les brackets métalliques sont emballés par 10 pcs

## LEGEND mini Kits

### LEGEND mini Kits

Prescription	Upper Arch	Lower Arch	With Hook	P/N	
				.018"	.022"
Type Roth	5-5	5-5	—	31-1CC0-0010	31-2CC0-0010
Type Roth	5-5	5-5	3	31-1CC3-0010	31-2CC3-0010
Type Roth	5-5	5-5	3,4,5	31-1CC5-0010	31-2CC5-0010
Type MBT*	5-5	5-5	—	31-1CC0-0020	31-2CC0-0020
Type MBT*	5-5	5-5	3	31-1CC3-0020	31-2CC3-0020
Type MBT*	5-5	5-5	3,4,5	31-1CC5-0020	31-2CC5-0020



# LEGEND mini V-slot Type BiDimensional\*



## LEGEND mini V-Slot BiDimensional MAXILLARY

Tooth	I/Omm	Torque(°)	Angulation(°)	Rotation(°)	P/N			
					.018"		.022"	
					R	L	R	L
U 1	.70	12°	5°	0°	31-1110-0034	31-1210-0034	—	—
U 2	.97	8°	9°	0°	31-1120-0034	31-1220-0034	—	—
U 3	.56	0°	7°	0°	—	—	31-2130-0040	31-2230-0040
U 3/Hk	.56	0°	7°	0°	—	—	31-213D-0040	31-223D-0040
U 4-5	.56	0°	0°	0°	—	—	31-2540-0040	31-2540-0040
U 4-5/Hk	.56	0°	0°	0°	—	—	31-215M-0040	31-225M-0040

## MANDIBULAR

Tooth	I/Omm	Torque(°)	Angulation(°)	Rotation(°)	P/N			
					.018"		.022"	
					R	L	R	L
L 1-2	.97	0°	0°	0°	31-1610-0034	31-1610-0034	—	—
L 3	.56	0°	5°	0°	—	—	31-2430-0040	31-2330-0040
L 3/Hk	.56	0°	5°	0°	—	—	31-243D-0040	31-233D-0040
L 4-5	.56	0°	0°	0°	—	—	31-2640-0040	31-2640-0040
L 4-5/Hk	.56	0°	0°	0°	—	—	31-244D-0040	31-234D-0040

Metalen brackets zijn verpakt per 10 stuks / Les brackets métalliques sont emballés par 10 pcs

# LEGEND mini Type Bio-Progressive\*

## LEGEND mini Bio-Progressive MAXILLARY

Tooth	I/O mm	Torque(°)	Angulation(°)	Rotation(°)	P/N	
					.018"	
					R	L
U 1	.25	22°	5°	0°	31-1110-0027	31-1210-0027
U 2	.25	13°	9°	0°	31-1120-0011	31-1220-0011
U 3/Hk	.25	7°	5°	0°	31-113D-0027	31-123D-0027
U 4-5	.40	0°	0°	0°	31-1540-0025	31-1540-0025

## MANDIBULAR

Tooth	I/O mm	Torque(°)	Angulation(°)	Rotation(°)	P/N	
					.018"	
					R	L
L 1-2	.97	-1°	0°	0°	31-1610-0010	31-1610-0010
L 3/Hk	.25	7°	5°	0°	31-143D-0027	31-133D-0027
L 4-5	.40	0°	0°	0°	31-1640-0025	31-1640-0025

Metalen brackets zijn verpakt per 10 stuks / Les brackets métalliques sont emballés par 10 pcs



# LEGEND medium Type Roth\*



## LEGEND medium Type Roth MAXILLARY

Tooth	I/O mm	Torque	Angulation	P/N			
				.018"		.022"	
				R	L	R	L
U 1	.25	12°	5°	32-1110-0010	32-1210-0010	32-2110-0010	32-2210-0010
U 1	.25	17°	5°	—	—	32-2110-0011	32-2210-0011
U 2	.78	8°	9°	32-1120-0010	32-1220-0010	32-2120-0010	32-2220-0010
U 2/Hk	.78	8°	9°	32-112D-0010	32-122D-0010	32-212D-0010	32-222D-0010
U 3	.25	2°	10°	32-1130-0010	32-1230-0010	32-2130-0010	32-2230-0010
U 3/Hk	.25	2°	10°	32-113D-0010	32-123D-0010	32-213D-0010	32-223D-0010
U 4	.37	-7°	0°	32-1540-0010	32-1540-0010	32-2540-0010	32-2540-0010
U4/Univ.	.37	-7°	0°	32-1540-0011	32-1540-0011	—	—
U 4/Hk	.37	-7°	0°	32-114M-0010	32-124M-0010	32-214M-0010	32-224M-0010
U 4/Hk/Off. Base	.37	-7°	0°	—	—	32-214M-0013	32-224M-0013
U 4-5/Off. B.	.37	-7°	0°	32-1540-0013	32-1540-0013	32-2540-0013	32-2540-0013
U 5	.48	-7°	0°	32-1550-0010	32-1550-0010	32-2550-0010	32-2550-0010
U 5/Hk	.48	-7°	0°	32-115M-0010	32-125M-0010	32-215M-0010	32-225M-0010
U 5/Hk/Off. Base	.48	-7°	0°	—	—	32-215M-0013	32-225M-0013

## MANDIBULAR

Tooth	I/O mm	Torque	Angulation	P/N			
				.018"		.022"	
				R	L	R	L
L 1	.97	-5°	0°	32-1610-0011	32-1610-0011	32-2610-0011	32-2610-0011
L 1-2	.97	-1°	0°	32-1610-0010	32-1610-0010	32-2610-0010	32-2610-0010
L 1-2/Hk	.97	-1°	0°	—	—	32-241D-0010	32-231D-0010
L 3	.25	-11°	7°	32-1430-0010	32-1330-0010	32-2430-0010	32-2330-0010
L 3/Hk	.25	-11°	7°	32-143D-0010	32-133D-0010	32-243D-0010	32-233D-0010
L 4	.28	-17°	0°	32-1640-0010	32-1640-0010	32-2640-0010	32-2640-0010
L 4/Hk	.28	-17°	0°	32-144D-0010	32-134D-0010	32-244D-0010	32-234D-0010
L 4/Off. B.	.28	-17°	0°	32-1640-0013	32-1640-0013	32-2640-0013	32-2640-0013
L 4/Hk, Off. B.	.28	-17°	0°	32-144D-0013	32-134D-0013	32-244D-0013	32-234D-0013
L 5	.33	-22°	0°	32-1650-0010	32-1650-0010	32-2650-0010	32-2650-0010
L 5/Hk	.33	-22°	0°	32-145D-0010	32-135D-0010	32-245D-0010	32-235D-0010
L 5/Off. B.	.33	-22°	0°	32-1650-0013	32-1650-0013	32-2650-0013	32-2650-0013
L 5/Hk, Off. B.	.33	-22°	0°	32-145D-0013	32-135D-0013	32-245D-0013	32-235D-0013

Metalen brackets zijn verpakt per 10 stuks / Les brackets métalliques sont emballés par 10 pcs



# LEGEND medium Type MBT\*



## LEGEND medium Type MBT\* MAXILLARY

Tooth	I/O mm	Torque	Angulation	P/N			
				.018"		.022"	
				R	L	R	L
U 1	.25	17°	4°	32-1110-0020	32-1210-0020	32-2110-0020	32-2210-0020
U 2	.78	10°	8°	32-1120-0020	32-1220-0020	32-2120-0020	32-2220-0020
U 3	.25	-7°	8°	32-1130-0020	32-1230-0020	32-2130-0020	32-2230-0020
U 3/Hk	.25	-7°	8°	32-113D-0020	32-123D-0020	32-213D-0020	32-223D-0020
U 3/Hk/(Optional)	.25	0°	8°	32-113D-0021	32-123D-0021	32-213D-0021	32-223D-0020
U 4	.37	-7°	0°	32-1540-0020	32-1540-0020	32-2540-0020	32-2540-0020
U 4/Hk	.37	-7°	0°	32-114M-0020	32-124M-0020	32-214M-0020	32-224M-0020
U 5	.48	-7°	0°	32-1550-0020	32-1550-0020	32-2550-0020	32-2550-0020
U 5/Hk	.48	-7°	0°	32-115M-0020	32-125M-0020	32-215M-0020	32-225M-0020

## MANDIBULAR

Tooth	I/O mm	Torque	Angulation	P/N			
				.018"		.022"	
				R	L	R	L
L 1-2	.97	-6°	0°	32-1610-0020	32-1610-0020	32-2610-0020	32-2610-0020
L 3	.30	-6°	3°	32-1430-0020	32-1330-0020	32-2430-0020	32-2330-0020
L 3/Hk	.30	-6°	3°	32-143D-0020	32-133D-0020	32-243D-0020	32-233D-0020
L 3/Hk/(Optional)	.30	0°	8°	-	-	32-243D-0021	32-233D-0021
L 4	.50	-12°	2°	32-1440-0020	32-1340-0020	32-2440-0020	32-2340-0020
L 4/Hk	.50	-12°	2°	32-144D-0020	32-134D-0020	32-244D-0020	32-234D-0020
L 4/Offset Base	.50	-12°	2°	32-1440-0073	32-1340-0073	32-2440-0073	32-2340-0073
L 4/Hk/Offset Base	.50	-12°	2°	32-144D-0073	32-134D-0073	32-244D-0073	32-234D-0073
L 5	.50	-17°	2°	32-1450-0020	32-1350-0020	32-2450-0020	32-2350-0020
L 5/Hk	.50	-17°	2°	32-145D-0020	32-135D-0020	32-245D-0020	32-235D-0020
L 5/Offset Base	.50	-17°	2°	32-1450-0073	32-1350-0073	32-2450-0073	32-2350-0073
L 5/Hk/Offset Base	.50	-17°	2°	32-145D-0073	32-135D-0073	32-245D-0073	32-235D-0073

Metalen brackets zijn verpakt per 10 stuks / Les brackets métalliques sont emballés par 10 pcs







# LEGEND medium Type Bio-Progressive\*



## LEGEND medium Bio-Progressive MAXILLARY

Tooth	I/O mm	Torque	Angulation	P/N			
				.018"		.022"	
				R	L	R	L
U 1	.25	22°	5°	32-1110-0027	32-1210-0027	32-2110-0027	32-2210-0027
U 2	.78	14°	9°	32-1120-0027	32-1220-0027	32-2120-0027	32-2220-0027
U 3	.25	7°	5°	32-1130-0027	32-1230-0027	32-2130-0027	32-2230-0027
U 3/Hk	.37	7°	5°	32-113D-0027	32-123D-0027	32-213D-0027	32-223D-0027
U 4-5	.48	0°	0°	32-1540-0027	32-1540-0027	—	—
U 4-5/Extra Torque	.48	-7°	0°	32-1540-0029	32-1540-0029	—	—
U 4-5/Hk	.48	0°	0°	32-114M-0027	32-124M-0027	—	—

## MANDIBULAR

L 1-2	.97	-1°	0°	32-1610-0010	32-1610-0010	32-2610-0010	32-2610-0010
L 3	.25	7°	5°	32-1430-0027	32-1330-0027	32-2430-0027	32-2330-0027
L 3/Hk	.25	7°	5°	32-143D-0027	32-133D-0027	32-243D-0027	32-233D-0027
L 4-5	.28	0°	0°	32-1640-0027	32-1640-0027	—	—
L 4-5/Hk	.28	0°	0°	32-144D-0027	32-134D-0027	—	—
L 4/Extra Torque	.36	-11°	0°	32-1640-0029	32-1640-0029	—	—
L 5/Extra Torque	.36	-17°	0°	32-1650-0029	32-1650-0029	—	—

Metalen brackets zijn verpakt per 10 stuks / Les brackets métalliques sont emballés par 10 pcs

# LEGEND medium V-slot Bio-Progressive\* V-slot

## LEGEND medium V-Slot Bio-Progressive V-Slot MAXILLARY

Tooth	I/O mm	Torque	Angulation	P/N			
				.018"		.022"	
				R	L	R	L
U 1	.41	22°	5°	32-1110-0028	32-1210-0028	32-2110-0028	32-2210-0028
U 2	.93	14°	9°	32-1120-0028	32-1220-0028	32-2120-0028	32-2220-0028
U 3/Hk	.36	7°	5°	32-113D-0028	32-123D-0028	32-213D-0028	32-223D-0028
U 4-5/univ.	.43	0°	0°	32-1540-0040	32-1540-0040	32-2540-0040	32-2540-0040

## MANDIBULAR

L 1-2	1.09	0°	0°	32-1610-0034	32-1610-0034	32-2610-0034	32-2610-0034
L 3/Hk	.36	7°	5°	32-143D-0028	32-133D-0028	32-243D-0028	32-233D-0028
L 4/univ.	.36	-11°	0°	32-1640-0034	32-1640-0034	—	—
L 5/univ.	.36	-17°	0°	32-1650-0029	32-1650-0029	—	—

Metalen brackets zijn verpakt per 10 stuks / Les brackets métalliques sont emballés par 10 pcs





# LEGEND medium

## V-slot Type BiDimensional\*



### LEGEND medium V-Slot BiDimensional MAXILLARY

Tooth	I/O mm	Torque	Angulation	P/N			
				.018"		.022"	
				R	L	R	L
U 1	.41	12°	5°	32-1110-0034	32-1210-0034	32-2110-0034	32-2210-0034
U 1	.41	17°	5°	32-1110-0029	32-1210-0029	32-2110-0029	32-2210-0029
U 2	.93	8°	9°	32-1120-0034	32-1220-0034	32-2120-0034	32-2220-0034
U 3	.36	0°	7°	32-1130-0040	32-1230-0040	—	—
U 3	.36	-2°	7°	32-1130-0034	32-1230-0034	32-2130-0034	32-2230-0034
U 3/Hk	.36	0°	7°	32-113D-0040	32-123D-0040	32-213D-0040	32-223D-0040
U 3/Hk	.36	-2°	7°	32-113D-0034	32-123D-0034	32-213D-0034	32-223D-0034
U 4/Hk	.43	0°	0°	—	—	32-214M-0040	32-224M-0040
U 4-5	.43	0°	0°	32-1540-0040	32-1540-0040	32-2540-0040	32-2540-0040
U 4-5	.43	-7°	0°	32-1540-0034	32-1540-0034	32-2540-0034	32-2540-0034
U 4-5/Hk	.43	-7°	0°	32-114M-0034	32-124M-0034	32-214M-0034	32-224M-0034
U 4-5/Hk	.43	0°	0°	—	—	32-214M-0040	32-224M-0040
U 4-5/Off. Base	.43	-7°	0°	32-1540-0035	32-1540-0035	32-2540-0035	32-2540-0035

### MANDIBULAR

Tooth	I/O mm	Torque	Angulation	P/N			
				.018"		.022"	
				R	L	R	L
L 1-2	1.09	0°	0°	32-1610-0034	32-1610-0034	32-2610-0034	32-2610-0034
L 1-2	1.09	-5°	0°	—	—	32-2610-0036	32-2610-0036
L 3	.36	-5°	7°	32-1430-0034	32-1330-0034	32-2430-0034	32-2330-0034
L 3/Hk	.36	-5°	7°	32-143D-0034	32-133D-0034	32-243D-0034	32-233D-0034
L 3/Hk	.36	0°	5°	—	—	32-243D-0040	32-233D-0040
L 4-5	.36	0°	0°	32-1640-0040	32-1640-0040	32-2640-0040	32-2640-0040
L 4	.36	-11°	0°	32-1640-0034	32-1640-0034	32-2640-0034	32-2640-0034
L 4/Off. Base	.36	-11°	0°	32-1640-0035	32-1640-0035	32-2640-0035	32-2640-0035
L 4/Hk	.36	-11°	0°	32-144D-0034	32-134D-0034	32-244D-0034	32-234D-0034
L 4/Hk	.36	0°	0°	—	—	32-244D-0040	32-234D-0040
L 4-5/Off. Base	.36	0°	0°	32-1640-0041	32-1640-0041	32-2640-0041	32-2640-0041
L 5	.36	-17°	0°	32-1650-0034	32-1650-0034	32-2650-0034	32-2650-0034
L 5/Hk	.36	-17°	0°	32-145D-0034	32-135D-0034	32-245D-0034	32-235D-0034
L 5/Off. Base	.36	-17°	0°	32-1650-0035	32-1650-0035	32-2650-0035	32-2650-0035

Metalen brackets zijn verpakt per 10 stuks / Les brackets métalliques sont emballés par 10 pcs

#### ACCESSORIES FOR V-SLOT BRACKETS

#### LEGEND MINI & MEDIUM HOOK FOR VERTICAL SLOTS

Description	P/N
Hook for V-Slot (Bag of 50)	69-1410-0000



Metalen/Métalliques BRACKETS



# LEGEND medium Kits



## LEGEND medium Kits

Prescription	Upper Arch	Lower Arch	With Hook	P/N	
				.018"	.022"
Type Roth	5-5	5-5	—	32-1CC0-0010	32-2CC0-0010
Type Roth	5-5	5-5	3	32-1CC3-0010	32-2CC3-0010
Type Roth	5-5	5-5	3,4,5	32-1CC5-0010	32-2CC5-0010
Extra Torque	5-5	5-5	3	32-1CC3-0030	32-2CC3-0030
Extra Torque	5-5	5-5	3,4,5	32-1CC5-0030	32-2CC5-0030
Type MBT*	5-5	5-5	—	32-1CC0-0020	32-2CC0-0020
Type MBT*	5-5	5-5	3	32-1CC3-0020	32-2CC3-0020
Type MBT*	5-5	5-5	3,4,5	32-1CC5-0020	32-2CC5-0020
Bio-Progressive	5-5	5-5	3	32-1CC3-0027	32-2CC3-0027
Bio-Progressive	5-5	5-5	3,4,5	32-1CC5-0027	32-2CC5-0027



# EDGEWISE bracket

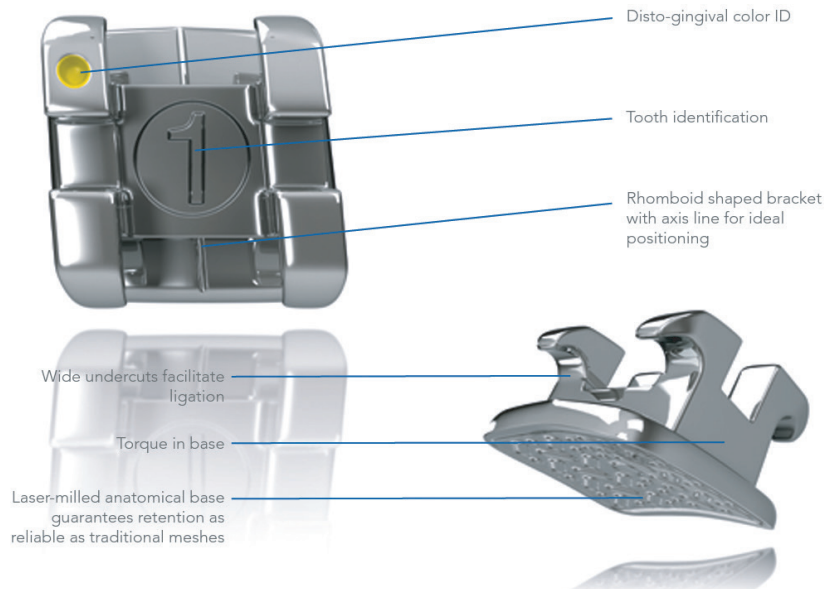


## EDGEWISE BRACKET

		.018"	.022"
U1	Standard WD	29-1510-0059	29-2510-0059
	Standard WD/+ V-slot Univ	36-1510-0059	36-2510-0059
	15°T WD	29-1510-0063	-
	22°T WD	29-1510-0064	29-2510-0064
	22°T/+ V-slot WD	36-1510-0064	-
U2	Standaard MED	29-1520-0053	29-2520-0053
	14°T MED	29-1520-0065	29-2520-0065
	V-slot MED	36-1520-0053	36-2520-0053
	14°T/+V-slot MED	36-1520-0065	-
U/L3	Standard MED	29-1730-0053	29-2730-0053
	Standard WD	29-1730-0059	29-2730-0059
	7°T MED	29-1630-0068	-
	V-slot MED	36-1730-0053	36-2730-0053
	V-slot WD	36-1730-0059	36-2730-0059
	7°T/+V-slot WD	36-1730-0067	-
UL/LR3	+Hook WD	29-153D-0059	29-253D-0059
UR/LL3	+Hook WD	29-163D-0059	29-263D-0059
U4-5	Standard MED Offset Wings TP	29-1540-0057	29-2540-0057
	V-slot MED Offset Wings TP	36-1540-0057	36-2540-0057
U/L6-7	Standard WD	29-1760-0059	29-2760-0059
	Standard XWD	29-1760-0062	29-2760-0062
	V-slot Univ WD	36-1760-0059	36-2760-0059
	-10°T WD	-	29-2660-0066
L1-2	Low Profile NAR	29-1610-0050	29-2610-0050
	Low Profile MED TP	29-1610-0055	29-2610-0055
	Low Profile NAR TP	29-1610-0051	29-2610-0051
	V-slot MED	36-1610-0053	36-2610-0053
L4-5	Low Profile MED TP	29-1640-0055	29-2640-0055
	V-slot Univ. MED	36-1740-0053	36-2740-0053

Metalen brackets zijn verpakt per 10 stuks / Les brackets métalliques sont emballés par 10 pcs

# AXCESS bracket



AXCESS, also manufactured by Tomy® in Japan, is an affordable bracket created from MIM (Metal Injection Molded) technology. All information (3 dimensions) is built into the bracket. Torque in base system. A laser-milled anatomical base guarantees retention as reliable as found in traditional meshes.

## AXCESS Type Roth MAXILLARY

Tooth	I/O mm	Torque	Angulation	P/N			
				.018"		.022"	
				R	L	R	L
U 1	.73	12°	5°	30-1110-0010	30-1210-0010	30-2110-0010	30-2210-0010
U 2	1.19	8°	9°	30-1120-0010	30-1220-0010	30-2120-0010	30-2220-0010
U 3/Hk	.56	-2°	13°	30-113D-0010	30-123D-0010	30-213D-0010	30-223D-0010
U 3/Hk Barbosa Type	.56	0°	13°	—	—	30-213D-0014	30-223D-0014
U 4-5	.56	-7°	0°	30-1540-0010	30-1540-0010	30-2540-0010	30-2540-0010
U 4-5/Hk	.56	-7°	0°	30-114M-0010	30-124M-0010	30-214M-0010	30-224M-0010

## MANDIBULAR

L 1-2	1.19	-1°	0°	30-1610-0010	30-1610-0010	30-2610-0010	30-2610-0010
L 3/Hk	.43	-11°	7°	30-143D-0010	30-133D-0010	30-243D-0010	30-233D-0010
L 3/Hk Barbosa Type	.43	-11°	7°	30-143D-0014	30-133D-0014	30-243D-0014	30-233D-0014
L 4 Offset base	.40	-17°	0°	30-1640-0013	30-1640-0013	30-2640-0013	30-2640-0013
L 4/Hk Offset base	.40	-17°	0°	30-144D-0010	30-134D-0010	30-244D-0010	30-234D-0010
L 5 Offset base	.38	-22°	0°	30-1650-0013	30-1650-0013	30-2650-0013	30-2650-0013
L 5/Hk Offset base	.38	-22°	0°	30-145D-0010	30-135D-0010	30-245D-0010	30-235D-0010

## AXCESS Type Roth Kits

Prescription	Upper	Lower	Hook on	P/N	
				.018"	.022"
Roth Type	5-5	5-5	3	30-1CC3-0010	30-2CC3-0010
Roth Type	5-5	5-5	3,4,5	30-1CC5-0010	30-2CC5-0010

# AXCESS bracket



## AXCESS Type MBT\*

### MAXILLARY

Tooth	I/O mm	Torque	Angulation	.022"	
				R	L
U 1	.73	17°	4°	30-2110-0020	30-2210-0020
U 2	1.19	10°	8°	30-2120-0020	30-2220-0020
U 3	.56	-7°	8°	30-2130-0020	30-2230-0020
U 3/Hk	.56	-7°	8°	30-213D-0020	30-223D-0020
U 4/Hk	.56	-7°	0°	30-214D-0020	30-224D-0020
U 5 (Optionnal)	.67	-7°	0°	30-2550-0020	30-2550-0020
U 5/Hk (Optionnal)	.67	-7°	0°	30-215D-0020	30-225D-0020
U 4-5	.56	-7°	0°	30-2540-0020	30-2540-0020

### MANDIBULAR

L 1-2	1.19	-6°	0°	30-2610-0020	30-2610-0020
L 3	.43	-6°	3°	30-2430-0020	30-2330-0020
L 3/Hk	.43	-6°	3°	30-243D-0020	30-233D-0020
L 4	.40	-12°	2°	30-2440-0020	30-2340-0020
L 4/Hk	.40	-12°	2°	30-244D-0020	30-234D-0020
L 5	.38	-17°	2°	30-2450-0020	30-2350-0020
L 5/Hk	.38	-17°	2°	30-245D-0020	30-2345D-0020

## Kits AXCESS Type MBT\*

Prescription	Upper	Lower	Hook on	.022"
MBT Type	5-5	5-5	3	30-2CC3-0020
MBT Type	5-5	5-5	3,4,5	30-2CC5-0020



# EXPERIENCE mini metal Type Roth\*



## EXPERIENCE mini metal Type Roth MAXILLARY

Tooth	Torque	Angulation	Rotation	P/N			
				.018"		.022"	
				R	L	R	L
U 1	12°	5°	0°	21-1110-0010	21-1210-0010	21-2110-0010	21-2210-0010
U 2	8°	9°	0°	21-1120-0010	21-1220-0010	21-2120-0010	21-2220-0010
U 2/Hk	8°	9°	0°	21-112D-0010	21-122D-0010	21-212D-0010	21-222D-0010
U 3	-2°	13°	4°m	21-1130-0010	21-1230-0010	21-2130-0010	21-2230-0010
U 3/Hk	-2°	13°	4°m	21-113D-0010	21-123D-0010	21-213D-0010	21-223D-0010
U 3/(Optional)	-2°	10°	4°m	21-113D-0012	21-123D-0012	21-213D-0012	21-223D-0012
U 3/Passive	-2°	10°	4°m	—	—	21-4130-0010	21-4230-0010
U 3/Hk Passive	-2°	10°	4°m	—	—	21-413D-0010	21-423D-0010
U 4-5	-7°	0°	2°d	21-1140-0010	21-1240-0010	21-2140-0010	21-2240-0010
U 4-5/Hk	-7°	0°	2°d	21-114D-0010	21-124D-0010	21-214D-0010	21-224D-0010
U 4-5 Passive	-7°	0°	2°d	—	—	21-4140-0010	21-4240-0010
U 4-5/Hk Passive	-7°	0°	2°d	—	—	21-414D-0010	21-424D-0010

\* Roth is a registered trademark of Roth Licensing LLC.

## MANDIBULAR

Tooth	Torque	Angulation	Rotation	P/N			
				.018"		.022"	
				R	L	R	L
L 1-2	-1°	2°	0°	21-1410-0010	21-1310-0010	21-2410-0010	21-2310-0010
L 1-2/Hk	-1°	2°	0°	—	—	21-232D-0010	21-242D-0010
L 3	-11°	7°	2°m	21-1430-0010	21-1330-0010	21-2430-0010	21-2330-0010
L 3/Hk	-11°	7°	2°m	21-143D-0010	21-133D-0010	21-243D-0010	21-233D-0010
L 3/Passive	-11°	7°	2°m	—	—	21-4430-0010	21-4330-0010
L 3/Hk Passive	-11°	7°	2°m	—	—	21-443D-0010	21-433D-0010
L 4	-17°	-1°	4°d	21-1440-0010	21-1340-0010	21-2440-0010	21-2340-0010
L 4/Hk	-17°	-1°	4°d	21-144D-0010	21-134D-0010	21-244D-0010	21-234D-0010
L 4/Passive	-17°	-1°	4°d	—	—	21-4440-0010	21-4340-0010
L 4/Hk Passive	-17°	-1°	4°d	—	—	21-444D-0010	21-434D-0010
L 5	-22°	-1°	4°d	21-1450-0010	21-1350-0010	21-2450-0010	21-2350-0010
L 5/Hk	-22°	-1°	4°d	21-145D-0010	21-135D-0010	21-245D-0010	21-235D-0010
L 5 Passive	-22°	-1°	4°d	—	—	21-4450-0010	21-4350-0010
L 5/Hk Passive	-22°	-1°	4°d	—	—	21-445D-0010	21-435D-0010

Metalen brackets zijn verpakt per 10 stuks / Les brackets métalliques sont emballés par 10 pcs



# EXPERIENCE mini metal Type MBT\*



## EXPERIENCE mini metal Type MBT MAXILLARY

Tooth	I/O mm	Torque	Angulation	P/N .018"	
				Interactive	
				R	L
U 1	0.74	17°	4°	21-1110-0020	21-1210-0020
U 2	1.06	10°	8°	21-1120-0020	21-1220-0020
U 3/Hk	0.55	-7°	8°	21-113D-0020	21-123D-0020
U 3/(Optional)	0.55	0°	8°	21-113D-0021	21-123D-0021
U 4-5	0.70	-7°	0°	21-1540-0020	21-1540-0020
U 4-5/Hk	0.70	-7°	0°	21-114D-0020	21-124D-0020
U 5/(Optional)	0.90	-7°	0°	21-1550-0020	21-1550-0020
U 5/Hk/(Optional)	0.90	-7°	0°	21-115D-0020	21-125D-0020

## MANDIBULAR

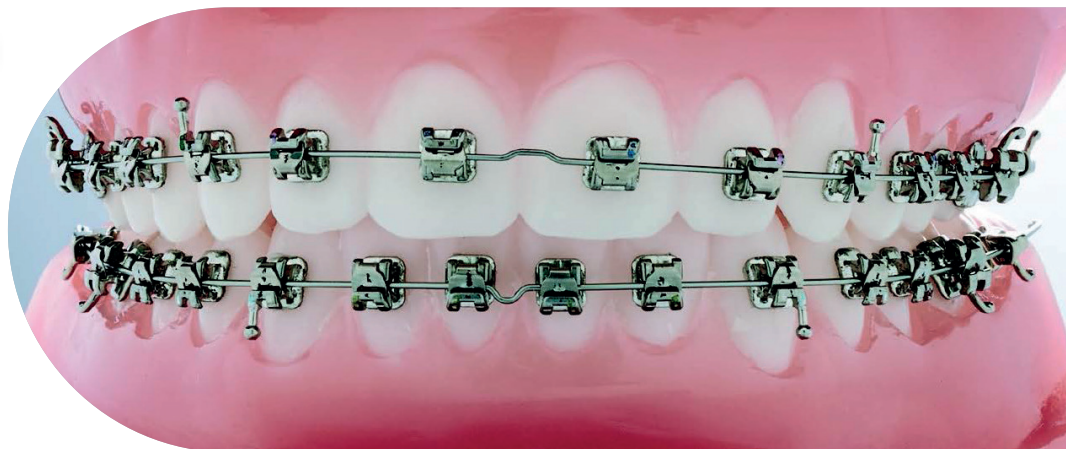
Tooth	I/O mm	Torque	Angulation	P/N .018"	
				Interactive	
				R	L
L 1-2	1.05	-6	0	21-1610-0020	21-1610-0020
L 3/Hk	0.55	-6	3	21-143D-0020	21-133D-0020
L 3/(Optional)	0.55	0	3	21-143D-0021	21-133D-0021
L 4	0.55	-12	2	21-1440-0020	21-1340-0020
L 4/Hk	0.55	-12	2	21-144D-0020	21-134D-0020
L 5	0.55	-17	2	21-1450-0020	21-1350-0020
L 5/Hk	0.55	-17	2	21-145D-0020	21-135D-0020

\*MBT is a trademark of 3M Unitek. All rights reserved.

Metalen brackets zijn verpakt per 10 stuks / Les brackets métalliques sont emballés par 10 pcs



50-0032-0000  
For Experience Mini metal/rhodium







# EXPERIENCE mini metal Type MBT\*



## EXPERIENCE mini metal Type MBT\* MAXILLARY

Tooth	I/O mm	Torque	Angulation	P/N .022"			
				Interactive		Passive	
				R	L	R	L
U 1	0.74	17°	4°	21-2110-0020	21-2210-0020	21-4110-0020	21-4210-0020
U 2	1.06	10°	8°	21-2120-0020	21-2220-0020	21-4120-0020	21-4220-0020
U 3	0.55	-7°	8°	21-2130-0020	21-2230-0020	21-4130-0020	21-4230-0020
U 3/Hk	0.55	-7°	8°	21-213D-0020	21-223D-0020	21-413D-0020	21-423D-0020
U 3/(Optional)	0.55	0°	8°	21-213D-0021	21-223D-0021	—	—
U 4-5	0.70	-7°	0°	21-2540-0020	21-2540-0020	21-4540-0020	21-4540-0020
U 4-5/Hk	0.70	-7°	0°	21-214D-0020	21-224D-0020	21-414D-0020	21-424D-0020
U 5/(Optional)	0.90	-7°	0°	21-2550-0020	21-2550-0020	21-4550-0020	21-4550-0020
U 5/Hk/(Optional)	0.90	-7°	0°	21-215D-0020	21-225D-0020	21-415D-0020	21-425D-0020

## MANDIBULAR

Tooth	I/O mm	Torque	Angulation	P/N .022"			
				Interactive		Passive	
				R	L	R	L
L 1-2	1.05	-6	0	21-2610-0020	21-2610-0020	21-4610-0020	21-4610-0020
L 3	0.55	-6	3	21-2430-0020	21-2330-0020	21-4430-0020	21-4330-0020
L 3/(Optional)	0.55	0	3	21-243D-0021	21-233D-0021	—	—
L 3/Hk	0.55	-6	3	21-243D-0020	21-233D-0020	21-443D-0020	21-433D-0020
L 4	0.55	-12	2	21-2440-0020	21-2340-0020	21-4440-0020	21-4340-0020
L 4/Hk	0.55	-12	2	21-244D-0020	21-234D-0020	21-444D-0020	21-434D-0020
L 5	0.55	-17	2	21-2450-0020	21-2350-0020	21-4450-0020	21-4350-0020
L 5/Hk	0.55	-17	2	21-245D-0020	21-235D-0020	21-445D-0020	21-435D-0020

Metalen brackets zijn verpakt per 10 stuks / Les brackets métalliques sont emballés par 10 pcs

# EXPERIENCE mini metal Kits

## EXPERIENCE mini metal Kits

Prescription	Upper arch	Lower arch	Hook on	P/N	
				.018"	.022"
Type Roth/Interactive	5-5	5-5	—	21-1CC0-0010	21-2CC0-0010
Type Roth/Interactive	5-5	5-5	3	21-1CC3-0010	21-2CC3-0010
Type Roth/Interactive	5-5	5-5	3,4,5	21-1CC5-0010	21-2CC5-0010
Type MBT*/Interactive	5-5	5-5	3	21-1CC3-0020	21-2CC3-0020
Type MBT*/Interactive	5-5	5-5	3,4,5	21-1CC5-0020	21-2CC5-0020
Type MBT*/Passive	5-5	5-5	3	—	21-4CC3-0020
Type MBT*/Passive	5-5	5-5	3,4,5	—	21-4CC5-0020



# EXPERIENCE mini metal



## EXPERIENCE mini metal GET



### MAXILLARY

Tooth	Torque	Angulation	Rotation	P/N	
				R	L
U 1 .020" x .028"	12°	5°	0°	21-5110-0500	21-5210-0500
U 2 .020" x .028"	8°	9°	0°	21-5120-0500	21-5220-0500
U 3/Hk .022" x .028"	0°	11°	0°	21-213D-0500	21-223D-0500
U 4/5 .022" x .028"	-10°	4°	2°d	21-2140-0500	21-2240-0500
U 4/5/Hk .022" x .028"	-10°	4°	2°d	21-214M-0500	21-224M-0500

### MANDIBULAR

Tooth	Torque	Angulation	Rotation	P/N	
				R	L
L 1/2 .020" x .028"	-1°	2°	0°	21-5410-0500	21-5310-0500
L 3/Hk .022" x .028"	-3°	3°	0°	21-243D-0500	21-233D-0500
L 4 .022" x .028"	-17°	1°	4°d	21-2440-0500	21-2340-0500
L 4/Hk .022" x .028"	-17°	1°	4°d	21-244D-0500	21-234D-0500
L 5 .022" x .028"	-22°	1°	4°d	21-2450-0500	21-2350-0500
L 5/Hk .022" x .028"	-22°	1°	4°d	21-245D-0500	21-235D-0500

## EXPERIENCE mini metal Extra Torque

### MAXILLARY

Tooth	Torque	Angulation	Rotation	P/N			
				.018"		.022"	
				R	L	R	L
U 1	18°	5°	0°	21-1110-0030	21-1210-0030	21-2110-0030	21-2210-0030
U 2	10°	8°	0°	21-1120-0030	21-1220-0030	21-2120-0030	21-2220-0030
U 2/Hk	10°	8°	0°	21-112D-0030	21-122D-0030	21-212D-0030	21-222D-0030
U 3	0°	8°	2°m	21-1130-0030	21-1230-0030	21-2130-0030	21-2230-0030
U 3/Hk	0°	8°	2°m	21-113D-0030	21-123D-0030	21-213D-0030	21-223D-0030
U 4-5	-10°	4°	2°d	21-1140-0030	21-1240-0030	21-2140-0030	21-2240-0030
U 4-5/Hk	-10°	4°	2°d	21-114M-0030	21-124M-0030	21-214M-0030	21-224M-0030

### MANDIBULAR

Tooth	Torque	Angulation	Rotation	P/N			
				.018"		.022"	
				R	L	R	L
L 1-2	1°	0°	0°	21-1610-0030	21-1610-0030	21-2610-0030	21-2610-0030
L 3	-3°	7°	2°m	21-1430-0030	21-1330-0030	21-2430-0030	21-2330-0030
L 3/Hk	-3°	7°	2°m	21-143D-0030	21-133D-0030	21-243D-0030	21-233D-0030
L4/(Optional)	0°	0°	0°	21-1540-0025	21-1540-0025	21-2540-0025	21-2540-0025
L 4/5	-7°	-1°	2°d	21-1440-0030	21-1340-0030	21-2440-0030	21-2340-0030
L 4/5/Hk	-7°	-1°	2°d	21-144D-0030	21-134D-0030	21-244D-0030	21-234D-0030

Metalen brackets zijn verpakt per 10 stuks / Les brackets métalliques sont emballés par 10 pcs



# EXPERIENCE metal

## Type Roth\*



### EXPERIENCE metal Type Roth MAXILLARY

Tooth	I/O mm	Torque	Angulation	Rotation	P/N			
					.018"		.022"	
					R	L	R	L
U 1	.81	12°	5°	0°	20-1110-0010	20-1210-0010	20-2110-0010	20-2210-0010
U 2	1.07	8°	9°	0°	20-1120-0010	20-1220-0010	20-2120-0010	20-2220-0010
U 2/Hk	1.07	8°	9°	0°	20-112D-0010	20-122D-0010	20-212D-0010	20-222D-0010
U 3	.46	-2°	13°	4°m	20-1130-0010	20-1230-0010	20-2130-0010	20-2230-0010
U 3/(Optional)	.46	-2°	10°	4°m	—	—	20-2130-0012	20-2230-0012
U 3/Hk	.46	-2°	13°	4°m	20-113D-0010	20-123D-0010	20-213D-0010	20-223D-0010
U 3/Hk	.46	-2°	10°	4°m	20-113D-0012	20-123D-0012	20-213D-0012	20-223D-0012
U 4-5	.46	-7°	0°	2°d	20-1140-0010	20-1240-0010	20-2140-0010	20-2240-0010
U 4-5/Hk d.	.46	-7°	0°	2°d	20-114D-0010	20-124D-0010	20-214D-0010	20-224D-0010
U 4-5/Hk m.	.46	-7°	0°	2°d	20-114M-0010	20-124M-0010	20-214M-0010	20-224M-0010

### MANDIBULAR

Tooth	I/O mm	Torque	Angulation	Rotation	P/N			
					.018"		.022"	
					R	L	R	L
L 1-2	1.17	-1°	2°	0° 2	0-1410-0010	20-1310-0010	20-2410-0010	20-2310-0010
L 2/Hk	1.17	-1°	2°	0°	—	—	20-242D-0010	20-232D-0010
L 3	.56	-11°	7°	2°m	20-1430-0010	20-1330-0010	20-2430-0010	20-2330-0010
L 3/Hk	.56	-11°	7°	2°m	20-143D-0010	20-133D-0010	20-243D-0010	20-233D-0010
L 4	.38	-17°	-1°	4°d	20-1440-0010	20-1340-0010	20-2440-0010	20-2340-0010
L 4/(Offset Base)	.38	-17°	-1°	4°d	20-1440-0013	20-1340-0013	20-2440-0013	20-2340-0013
L 4/Hk	.38	-17°	-1°	4°d	20-144D-0010	20-134D-0010	20-244D-0010	20-234D-0010
L 4/Hk/(Off. Base)	.38	-17°	-1°	4°d	—	—	20-244D-0013	20-234D-0013
L 5	.28	-22°	-1°	4°d	20-1450-0010	20-1350-0010	20-2450-0010	20-2350-0010
L 5/(Offset Base)	.28	-22°	-1°	4°d	20-1450-0013	20-1350-0013	20-2450-0013	20-2350-0013
L 5/Hk	.28	-22°	-1°	4°d	20-145D-0010	20-135D-0010	20-245D-0010	20-235D-0010
L 5/Hk/(Off. Base)	.28	-22°	-1°	4°d	—	—	20-245D-0013	20-235D-0013

Metalen brackets zijn verpakt per 10 stuks /  
Les brackets métalliques sont emballés par 10 pcs





# EXPERIENCE metal

## Type Roth\*



### EXPERIENCE metal Type Roth .020"x .028"

This bracket features an original slot size on upper and lower incisors: .020"x .028". In conjunction with .020"x .025" stainless steel archwires, the system controls the anterior torque and provides increased rigidity to the buccal segments during space closure.

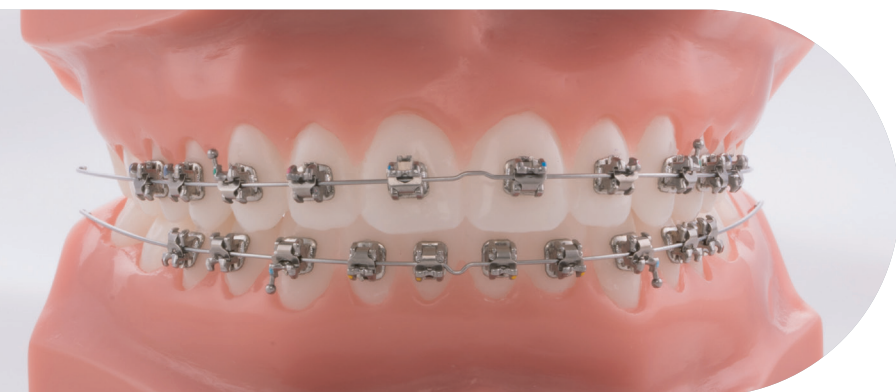
#### MAXILLARY

Tooth	I/O mm	Torque	Angulation	Rotation	P/N	
					R	L
U 1 .020"x .028"	.81	12°	5°	0°	20-5110-0010	20-5210-0010
U 2 .020"x .028"	1.07	8°	9°	0°	20-5120-0010	20-5220-0010
U 3 Hk .022"x .028"	.46	0°	8°	2°m	20-213D-0030	20-223D-0030
U 4/5 .022"x .028"	.46	-7°	0°	2°d	20-2140-0010	20-2240-0010
U 4/5 Hk .022"x .028"	.46	-7°	0°	2°d	20-214D-0010	20-224D-0010

#### MANDIBULAR

Tooth	I/O mm	Torque	Angulation	Rotation	P/N	
					R	L
L 1/2 .020"x .028"	1.17	-1°	2°	0°	20-5410-0010 2	0-5310-0010
L 3 Hk .022"x .028"	.56	-3°	7°	2°m	20-243D-0030	20-233D-0030
L 4 Hk .022"x .028"	.38	-17°	-1°	4°d	20-244D-0010	20-234D-0010
L 5 Hk .022"x .028"	.28	-22°	-1°	4°d	20-245D-0010	20-235D-0010

Metalen brackets zijn verpakt per 10 stuks / Les brackets métalliques sont emballés par 10 pcs





# EXPERIENCE metal

## Extra Torque



### EXPERIENCE metal Extra Torque

This prescription is based on the use of less than full size archwires due to increased torque on the maxillary incisors. Increased buccal root torque in the upper bicuspids prevents any lingual cusp interference.

#### MAXILLARY

Tooth	I/O mm	Torque	Angulation	Rotation	P/N			
					.018"		.022"	
					R	L	R	L
U 1	.81	18°	5°	0°	20-1110-0030	20-1210-0030	20-2110-0030	20-2210-0030
U 2	1.07	10°	8°	0°	20-1120-0030	20-1220-0030	20-2120-0030	20-2220-0030
U 2/Hk	1.07	10°	8°	0°	20-112D-0030	20-122D-0030	20-212D-0030	20-222D-0030
U 3	.46	0°	8°	2°m	20-1130-0030	20-1230-0030	20-2130-0030	20-2230-0030
U 3/Hk	.46	0°	8°	2°m	20-113D-0030	20-123D-0030	20-213D-0030	20-223D-0030
U 4-5	.46	-10°	4°	2°d	20-1140-0030	20-1240-0030	20-2140-0030	20-2240-0030
U 4-5/Hk	.46	-10°	4°	2°d	20-114M-0030	20-124M-0030	20-214M-0030	20-224M-0030

#### MANDIBULAR

Tooth	I/O mm	Torque	Angulation	Rotation	P/N			
					.018"		.022"	
					R	L	R	L
L 1-2	1.17	1°	0°	0°	20-1610-0030	20-1610-0030	20-2610-0030	20-2610-0030
L 3	.56	-3°	7°	2°m	20-1430-0030	20-1330-0030	20-2430-0030	20-2330-0030
L 3/Hk	.56	-3°	7°	2°m	20-143D-0030	20-133D-0030	20-243D-0030	20-233D-0030
L 4/5	.33	-7°	-1°	2°d	20-1440-0030	20-1340-0030	20-2440-0030	20-2340-0030
L 4/5/Hk	.33	-7°	-1°	2°d	20-144D-0030	20-134D-0030	20-244D-0030	20-234D-0030

Metalen brackets zijn verpakt per 10 stuks /  
Les brackets métalliques sont emballés par 10 pcs







# EXPERIENCE metal

## Type MBT\*



### EXPERIENCE metal Type MBT\*

#### MAXILLARY

Tooth	I/O mm	Torque	Angulation	Rotation	P/N			
					.018"		.022"	
					R	L	R	L
U 1	.81	17°	4°	0°	20-1110-0020	20-1210-0020	20-2110-0020	20-2210-0020
U 2 1	.07	10°	8°	0°	20-1120-0020	20-1220-0020	20-2120-0020	20-2220-0020
U 3	.46	-7°	8°	0°	20-1130-0020	20-1230-0020	20-2130-0020	20-2230-0020
U 3/Hk	.46	-7°	8°	0°	20-113D-0020	20-123D-0020	20-213D-0020	20-223D-0020
U 3/Hk	.46	0°	8°	0°	20-113D-0021	20-123D-0021	20-213D-0021	20-223D-0021
U 4-5	.46	-7°	0°	0°	20-1540-0020	20-1540-0020	20-2540-0020	20-2540-0020
U 4-5/Hk	.46	-7°	0°	0°	20-114D-0020	20-124D-0020	20-214D-0020	20-224D-0020
U 5/(Optional)	.96	-7°	0°	0°	20-1540-0020X	20-1540-0020X	20-2550-0020	20-2550-0020
U 5/Hk/(Opt)	.96	-7°	0°	0°	20-115D-0020	20-125D-0020	20-215D-0020	20-225D-0020

#### MANDIBULAR

Tooth	I/O mm	Torque	Angulation	Rotation	P/N			
					.018"		.022"	
					R	L	R	L
L 1-2	1.17	-6°	0°	0°	20-1610-0020	20-1610-0020	20-2610-0020	20-2610-0020
L 3	.56	-6°	3°	0°	20-1430-0020	20-1330-0020	20-2430-0020	20-2330-0020
L 3/Hk	.56	-6°	3°	0°	20-143D-0020	20-133D-0020	20-243D-0020	20-233D-0020
L 3/Hk	.56	0°	3°	0°	20-143D-0021	20-133D-0021	20-243D-0021	20-233D-0021
L 4	.33	-12°	2°	0°	20-1440-0020	20-1340-0020	20-2440-0020	20-2340-0020
L 4/Hk	.33	-12°	2°	0°	20-144D-0020	20-134D-0020	20-244D-0020	20-234D-0020
L 5	.33	-17°	2°	0°	20-1450-0020	20-1350-0020	20-2450-0020	20-2350-0020
L 5/Hk	.33	-17°	2°	0°	20-145D-0020	20-135D-0020	20-245D-0020	20-235D-0020

Metalen brackets zijn verpakt per 10 stuks /  
Les brackets métalliques sont emballés par 10 pcs





# EXPERIENCE metal

## Type Andrews\*



### EXPERIENCE metal Type Andrews MAXILLARY

Tooth	I/O mm	Torque	Angulation	Rotation	P/N	
					.022"	
					R	L
U 1	.81	7°	5°	0°	20-2110-0044	20-2210-0044
U 2	1.07	3°	9°	0°	20-2120-0044	20-2220-0044
U 3/Hk	.46	-7°	11°	0°	20-213D-0044	20-223D-0044
U 4/5	.46	-7°	0°	0°	20-2540-0044	20-2540-0044

### MANDIBULAR

Tooth	I/O mm	Torque	Angulation	Rotation	P/N	
					.022"	
					R	L
L 1/2	1.17	-6°	2°	0°	20-2410-0044	20-2310-0044
L 1/2	1.17	-1°	0°	0°	20-2610-0044	20-2610-0044
L 3/Hk	.56	-11°	5°	0°	20-243D-0044	20-233D-0044
L 4	.38	-17°	0°	0°	20-2640-0044	20-2640-0044
L 5	.28	-22°	0°	0°	20-2650-0044	20-2650-0044

Metalen brackets zijn verpakt per 10 stuks / Les brackets métalliques sont emballés par 10 pcs

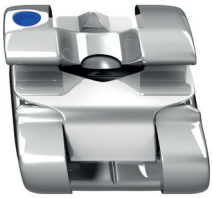
# EXPERIENCE metal Optional

### EXPERIENCE metal Optional MAXILLARY

Tooth	I/O mm	Torque	Angulation	Rotation	P/N			
					.018"		.022"	
					R	L	R	L
U 1	.81	24°	5°	0°	—	—	20-2110-0017	20-2210-0017
U 2	1.07	16°	8°	0°	—	—	20-2120-0017	20-2220-0017
U 3/Hk	.46	7°	5°	0°	20-113D-0027	20-123D-0027	20-213D-0027	20-223D-0027
U 4	.46	0°	0°	0°	20-1540-0025	20-1540-0025	20-2540-0025	20-2540-0025

Metalen brackets zijn verpakt per 10 stuks / Les brackets métalliques sont emballés par 10 pcs





# EXPERIENCE metal Kits



## EXPERIENCE metal Kits

EXPERIENCE metal .020" x .028" Kit	Upper arch	Lower arch	With Hook	P/N
Type Roth .020" x .028"	5-5	5-5	3,4,5	.020" x .028" 20-5CC5-0010

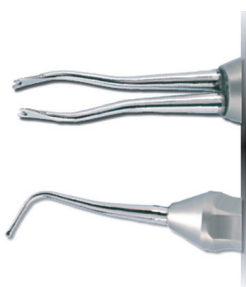
Prescription	Upper arch	Lower arch	With Hook	P/N
Type Roth	5-5	5-5	—	.018" .022" 20-1CC0-0010 20-2CC0-0010
Type Roth	5-5	5-5	3	20-1CC3-0010 20-2CC3-0010
Type Roth	5-5	5-5	3,4,5	20-1CC5-0010 20-2CC5-0010

Prescription	Upper arch	Lower arch	With Hook	P/N
Extra Torque	5-5	5-5	—	.018" .022" 20-1CC0-0030 20-2CC0-0030
Extra Torque	5-5	5-5	3	20-1CC3-0030 20-2CC3-0030
Extra Torque	5-5	5-5	3,4,5	20-1CC5-0030 20-2CC5-0030

Prescription	Upper arch	Lower arch	With Hook	P/N
Type MBT*	5-5	5-5	—	.018" .022" 20-1CC0-0020 20-2CC0-0020
Type MBT*	5-5	5-5	3	20-1CC3-0020 20-2CC3-0020
Type MBT*	5-5	5-5	3,4,5	20-1CC5-0020 20-2CC5-0020

Prescription	Upper arch	Lower arch	With Hook	P/N
Andrews Type	5-5	5-5	3	.018" .022" — 20-2CC3-0044
ACO	5-5	5-5	3	— 20-2CC3-0007
ACO	5-5	5-5	3,4,5	— 20-2CC5-0007

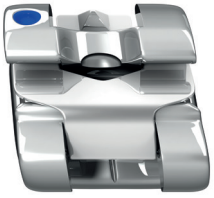
Instruments for working with EXPERIENCE brackets:



M-tool features both a double forked end to facilitate wire insertion and an end with a hollow ball to safely open the bracket from the gingival edge  
P/N. 50-2030-0000



Open tool is for opening EXPERIENCE brackets either from the buccal face (hook side) or from the gingival edge (safety) using the hollow sphere.  
P/N. 50-0030-0000



# EXPERIENCE metal

## ACO

### EXPERIENCE CERAMIC ACO

#### MAXILLARY

Tooth	Torque	Angulation	Rotation	P/N	
				.022" x.028"	
				R	L
U 1	12°	5°	0°	20-2110-0007	20-2210-0007
U 2	10°	9°	0°	20-2120-0007	20-2220-0007
U 3/Hk	-7°	10°	2m	20-213D-0007	20-223D-0007
U 4-5	-9°	0°	0°	20-2540-0007	20-2540-0007
U 4-5/Hk	-9°	0°	0°	20-214D-0007	20-224D-0007

#### MANDIBULAR

Tooth	Torque	Angulation	Rotation	P/N	
				.022" x.028"	
				R	L
L 1/2	-6°	0°	0°	20-2610-0007	20-2610-0007
L 3/Hk	-8°	3°	0°	20-243D-0007	20-233D-0007
L 4	-12°	2°	0°	20-2440-0007	20-2340-0007
L 4/Hk	-12°	2°	0°	20-244D-0007	20-234D-0007
L 5	-17°	-1°	0°	20-2450-0007	20-2350-0007
L 5/Hk	-17°	-1°	0°	20-245D-0007	20-235D-0007



# EXPERIENCE L



## EXPERIENCE L MAXILLARY

Tooth	Torque	Angulation	Rotation	P/N	
				.018"	
				R	L
U 1-2	60°	0°	0°	16-1510-0010	16-1510-0010
U 3	60°	0°	0°	16-1530-0010	16-1530-0010
U 3/Hk	60°	0°	0°	16-153U-0010	16-153U-0010
U 4-5	10°	0°	0°	16-1740-0010	16-1740-0010
U 4-5/Hk	10°	0°	0°	16-174U-0010	16-174U-0010
U 6-7/Hk	10°	0°	0°	16-116M-0010	16-126M-0010
U 7/Comfortube	0°	0°	0°	40-1770-0000	40-1770-0000

## MANDIBULAR

Tooth	Torque	Angulation	Rotation	P/N	
				.018"	
				R	L
L 1-2	50°	0°	0°	16-1610-0010	16-1610-0010
L 3	50°	0°	0°	16-1630-0010	16-1630-0010
L 3/Hk	50°	0°	0°	16-163U-0010	16-163U-0010
L 4-5	10°	0°	0°	16-1740-0010	16-1740-0010
L 4-5/Hk	10°	0°	0°	16-174U-0010	16-174U-0010
L 6-7/Hk	0°	0°	0°	16-146M-0010	16-136M-0010
L 7/Comfortube	0°	0°	0°	40-1770-0000	40-1770-0000

Deze brackets zijn verpakt per 5 stuks / Ces brackets sont emballés par 5 pcs

## EXPERIENCE L Kits (Brackets Only)

	P/N
	.018"
U 7-7	16-1A00-0010
U/L 7-7	16-1AA0-0010



# EXPERIENCE LSB



## EXPERIENCE LSB MAXILLARY

Tooth	Torque	Angulation	Rotation	P/N	
				.018"	
				R	L
U 1-2-3	60°	0°	0°	17-1510-0010	17-1510-0010
U 3/Hk	60°	0°	0°	17-153U-0010	17-153U-0010

## MANDIBULAR

Tooth	Torque	Angulation	Rotation	P/N	
				.018"	
				R	L
L 1-2-3	50°	0°	0°	17-1610-0010	17-1610-0010
L 1-2-3/Narrow Base	50°	0°	0°	17-1610-0050	17-1610-0050
L 3/Hk	50°	0°	0°	17-163U-0010	17-163U-0010

Deze brackets zijn verpakt per 5 stuks /Ces brackets sont emballés par 5 pcs

## EXPERIENCE LSB Kits (Brackets Only)

	P/N
	.018"
EXPERIENCE LSB U 3-3 Kit	17-1E00-0010
EXPERIENCE LSB L 3-3 Kit	17-10E0-0010
EXPERIENCE LSB U/L 3-3 Kit	17-1EE0-0010





# miniPrevail®Twin

PRECISION MANUFACTURED BY G&H® ORTHODONTICS

## miniPrevail®TWIN Brackets MAXILLARY ROTH' Rx

Tooth	Torque	Angle	Rotation	M/D	R/L	ID	Mesh Base		Offset Bicuspid Mesh Base Option	
							.018	.022	.018	.022
Central	12°	5°	0°	.140"	R	●	36-U1-8R	36-U1-2R	-	-
					L	●	36-U1-8L	36-U1-2L	-	-
Central Hi-Torque	22°	5°	0°	.140"	R	●	39-U1-8R	39-U1-2R	-	-
					L	●	39-U1-8L	39-U1-2L	-	-
Lateral	8°	9°	0°	.115"	R	○	36-U2-8R	36-U2-2R	-	-
					L	○	36-U2-8L	36-U2-2L	-	-
Lateral Hi-Torque	14°	9°	0°	.115"	R	○	39-U2-8R	39-U2-2R	-	-
					L	○	39-U2-8L	39-U2-2L	-	-
Cuspid (-Hook)	0°	11°	0°	.122"	R	●	36-U3-8R	36-U3-2R	-	-
					L	●	36-U3-8L	36-U3-2L	-	-
Cuspid Hk (+Hook)	0°	11°	0°	.122"	R	●	36-U3-8RK	36-U3-2RK	-	-
					L	●	36-U3-8LK	36-U3-2LK	-	-
Bicuspid	-7°	0°	0°	.122"	U	●●	36-U4-8U	36-U4-2U	36-U4-8UO	36-U4-2UO
Bicuspid Hk	-7°	0°	0°	.122"	R	●	36-U4-8RK	36-U4-2RK	36-U4-8RKO	36-U4-2RKO
					L	●	36-U4-8LK	36-U4-2LK	36-U4-8LKO	36-U4-2LKO

## MANDIBULAR ROTH' Rx

Tooth	Torque	Angle	Rotation	M/D	R/L	ID	Mesh Base		Offset Bicuspid Mesh Base Option	
							.018	.022	.018	.022
Anterior	0°	0°	0°	.100"	U	●●	36-L1-8U	36-L1-2U	-	-
Cuspid (-Hook)	-11°	5°	0°	.122"	R	●	36-L3-8R	36-L3-2R	-	-
					L	●	36-L3-8L	36-L3-2L	-	-
Cuspid Hk (+ Hook)	-11°	5°	0°	.122"	R	●	36-L3-8RK	36-L3-2RK	-	-
					L	●	36-L3-8LK	36-L3-2LK	-	-
1 <sup>st</sup> Bicuspid	-17°	0°	0°	.122"	U	●●	36-L4-8U	36-L4-2U	36-L4-8UO	36-L4-2UO
1 <sup>st</sup> Bicuspid Hk	-17°	0°	0°	.122"	R	●	36-L4-8RK	36-L4-2RK	36-L4-8RKO	36-L4-2RKO
					L	●	36-L4-8LK	36-L4-2LK	36-L4-8LKO	36-L4-2LKO
2 <sup>nd</sup> Bicuspid	-22°	0°	0°	.122"	U	●●	36-L5-8U	36-L5-2U	36-L5-8UO	36-L5-2UO
2 <sup>nd</sup> Bicuspid Hk	-22°	0°	0°	.122"	R	●	36-L5-8RK	36-L5-2RK	36-L5-8RKO	36-L5-2RKO
					L	●	36-L5-8LK	36-L5-2LK	36-L5-8LKO	36-L5-2LKO

Metalen brackets zijn verpakt per 10 stuks / Les brackets métalliques sont emballés par 10 pcs

### Bracket Kits ROTH' Rx

20 brackets per kit	Mesh Base		Offset Bicuspid Mesh Base Option	
	.018	.022	.018	.022
Upper/Lower 5x5 Hook on 3	36K-3-18-01	36K-3-22-01	36KO-3-18-01	36KO-3-22-01
Upper/Lower 5x5 Hook on 3, 4, & 5	36K-345-18-01	36K-345-22-01	36KO-345-18-01	36KO-345-22-01

Brackets are packaged with 1 case oriented in a kit box.



# miniPrevail®Twin

PRECISION MANUFACTURED BY G&H® ORTHODONTICS

## miniPrevail®TWIN Brackets Vertical slot measures .018x.018 MAXILLARY ROTH' Rx V-Slot

Tooth	Torque	Angle	Rotation	M/D	R/L	ID	Mesh Base		Offset Bicuspid Mesh Base Option	
							.018	.022	.018	.022
Central	12°	5°	0°	.140"	R	●	38-U1-8R	38-U1-2R	-	-
					L	●	38-U1-8L	38-U1-2L	-	-
Lateral	8°	9°	0°	.115"	R	○	38-U2-8R	38-U2-2R	-	-
					L	○	38-U2-8L	38-U2-2L	-	-
Cuspid (-Hook)	0°	11°	0°	.122"	R	●	38-U3-8R	38-U3-2R	-	-
					L	●	38-U3-8L	38-U3-2L	-	-
Cuspid Hk (+Hook)	0°	11°	0°	.122"	R	●	38-U3-8RK	38-U3-2RK	-	-
					L	●	38-U3-8LK	38-U3-2LK	-	-
Bicuspid	-7°	0°	0°	.122"	U	●●	38-U4-8U	38-U4-2U	38-U4-8UO	38-U4-2UO
Bicuspid Hk	-7°	0°	0°	.122"	R	●	38-U4-8RK	38-U4-2RK	38-U4-8RKO	38-U4-2RKO
					L	●	38-U4-8LK	38-U4-2LK	38-U4-8LKO	38-U4-2LKO

## MANDIBULAR ROTH' Rx V-Slot

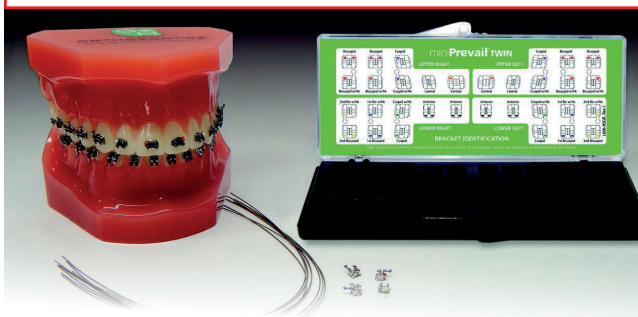
Tooth	Torque	Angle	Rotation	M/D	R/L	ID	Mesh Base		Offset Bicuspid Mesh Base Option	
							.018	.022	.018	.022
Anterior	0°	0°	0°	.100"	U	●●	38-L1-8U	38-L1-2U	-	-
Cuspid (-Hook)	-11°	5°	0°	.122"	R	●	38-L3-8R	38-L3-2R	-	-
					L	●	38-L3-8L	38-L3-2L	-	-
Cuspid Hk (+Hook)	-11°	5°	0°	.122"	R	●	38-L3-8RK	38-L3-2RK	-	-
					L	●	38-L3-8LK	38-L3-2LK	-	-
1 <sup>st</sup> Bicuspid	-17°	0°	0°	.122"	U	●●	38-L4-8U	38-L4-2U	38-L4-8UO	38-L4-2UO
1 <sup>st</sup> Bicuspid Hk	-17°	0°	0°	.122"	R	●	38-L4-8RK	38-L4-2RK	38-L4-8RKO	38-L4-2RKO
					L	●	38-L4-8LK	38-L4-2LK	38-L4-8LKO	38-L4-2LKO
2 <sup>nd</sup> Bicuspid	-22°	0°	0°	.122"	U	●●	38-L5-8U	38-L5-2U	38-L5-8UO	38-L5-2UO
2 <sup>nd</sup> Bicuspid Hk	-22°	0°	0°	.122"	R	●	38-L5-8RK	38-L5-2RK	38-L5-8RKO	38-L5-2RKO
					L	●	38-L5-8LK	38-L5-2LK	38-L5-8LKO	38-L5-2LKO

Metalen brackets zijn verpakt per 10 stuks / Les brackets métalliques sont emballés par 10 pcs

## Bracket Kits ROTH' Rx V-Slot

20 brackets per kit	Mesh Base		Offset Bicuspid Mesh Base Option	
	.018	.022	.018	.022
Upper/Lower 5x5 Hook on 3	38K-3-18-01	38K-3-22-01	38KO-3-18-01	38KO-3-22-01
Upper/Lower 5x5 Hook on 3, 4, & 5	38K-345-18-01	38K-345-22-01	38KO-345-18-01	38KO-345-22-01

Brackets are packaged with 1 case oriented in a kit box.



**Metalen/Métalliques BRACKETS**



# miniPrevail®Twin

PRECISION MANUFACTURED BY G&H® ORTHODONTICS

## miniPrevail®TWIN Brackets MAXILLARY MBT<sup>2</sup> Rx

Tooth	Torque	Angle	Rotation	M/D	R/L	ID	Mesh Base		Offset Bicuspid Mesh Base Option	
							.018	.022	.018	.022
Central	17°	4°	0°	.140"	R	●	37-U1-8R	37-U1-2R	-	-
					L	●	37-U1-8L	37-U1-2L	-	-
Lateral	10°	8°	0°	.115"	R	○	37-U2-8R	37-U2-2R	-	-
					L	○	37-U2-8L	37-U2-2L	-	-
Cuspid (-Hook)	-7°	8°	0°	.122"	R	●	37-U3-8R	37-U3-2R	-	-
					L	●	37-U3-8L	37-U3-2L	-	-
Cuspid Hk (+Hook)	-7°	8°	0°	.122"	R	●	37-U3-8RK	37-U3-2RK	-	-
					L	●	37-U3-8LK	37-U3-2LK	-	-
Cuspid (-Hook)	0°	8°	0°	.122"	R	●	37-U3-8R0	37-U3-2R0	-	-
					L	●	37-U3-8L0	37-U3-2L0	-	-
Cuspid Hk (+Hook)	0°	8°	0°	.122"	R	●	37-U3-8RK0	37-U3-2RK0	-	-
					L	●	37-U3-8LK0	37-U3-2LK0	-	-
Bicuspid	-7°	0°	0°	.122"	U	●●	37-U4-8U	37-U4-2U	37-U4-8UO	37-U4-2UO
Bicuspid Hk	-7°	0°	0°	.122"	R	●	37-U4-8RK	37-U4-2RK	37-U4-8RKO	37-U4-2RKO
					L	●	37-U4-8LK	37-U4-2LK	37-U4-8LKO	37-U4-2LKO

## MANDIBULAR MBT<sup>2</sup> Rx

Tooth	Torque	Angle	Rotation	M/D	R/L	ID	Mesh Base		Offset Bicuspid Mesh Base Option	
							.018	.022	.018	.022
Anterior	-6°	0°	0°	.100"	U	●●	37-L1-8U	37-L1-2U	-	-
Cuspid (-Hook)	-6°	3°	0°	.122"	R	●	37-L3-8R	37-L3-2R	-	-
					L	●	37-L3-8L	37-L3-2L	-	-
Cuspid Hk (+Hook)	-6°	3°	0°	.122"	R	●	37-L3-8RK	37-L3-2RK	-	-
					L	●	37-L3-8LK	37-L3-2LK	-	-
Cuspid (-Hook)	0°	3°	0°	.122"	R	●	37-L3-8R0	37-L3-2R0	-	-
					L	●	37-L3-8L0	37-L3-2L0	-	-
Cuspid Hk (+Hook)	0°	3°	0°	.122"	R	●	37-L3-8RK0	37-L3-2RK0	-	-
					L	●	37-L3-8LK0	37-L3-2LK0	-	-
1st Bicuspid	-12°	0°	0°	.122"	U	●●	37-L4-8U	37-L4-2U	37-L4-8UO	37-L4-2UO
1st Bicuspid Hk	-12°	0°	0°	.122"	R	●	37-L4-8RK	37-L4-2RK	37-L4-8RKO	37-L4-2RKO
					L	●	37-L4-8LK	37-L4-2LK	37-L4-8LKO	37-L4-2LKO
2nd Bicuspid	-17°	0°	0°	.122"	U	●●	37-L5-8U	37-L5-2U	37-L5-8UO	37-L5-2UO
					2nd Bicuspid Hk	-17°	0°	0°	.122"	R
L	●	37-L5-8LK	37-L5-2LK	37-L5-8LKO						37-L5-2LKO

Metalen brackets zijn verpakt per 10 stuks / Les brackets métalliques sont emballés par 10 pcs

### Bracket Kits MBT<sup>2</sup> Rx

20 brackets per kit	Mesh Base		Offset Bicuspid Mesh Base Option	
	.018	.022	.018	.022
Upper/Lower 5x5 Hook on 3	37K-3-18-01	37K-3-22-01	37KO-3-18-01	37KO-3-22-01
Upper/Lower 5x5 Hook on 3, 4, & 5	37K-345-18-01	37K-345-22-01	37KO-345-18-01	37KO-345-22-01

MBT Rx kits include 0° torque on the cuspids - custom kits available upon request.  
Brackets are packaged with 1 case oriented in a kit box. Brackets are also available in kits of 5 or 10 cases oriented in a carousel dispenser. Brackets are also available as kits in bags





# Evolve Bracket system

## Type MBT\*/Roth\*

### Evolve bracket system MAXILLARY ARCH

	MBT*.022				Roth*.022			
	Torq°	Angle°	Width (mm)	Code	Torq°	Angle°	Width (mm)	Code
Right Central	17	4	4.0	DB16-0100	12	5	4.0	DB16-0040
Left Central	17	4	4.0	DB16-0101	12	5	4.0	DB16-0041
Right Lateral	10	8	3.0	DB16-0102	8	9	3.0	DB16-0042
Left Lateral	10	8	3.0	DB16-0103	8	9	3.0	DB16-0043
Right Cuspid w/ Hook	-7	9	3.5	DB16-0104	0	11	3.5	DB16-0046
Left Cuspid w/ Hook	-7	9	3.5	DB16-0105	0	11	3.5	DB16-0047
Right Cuspid	-7	9	3.5	DB16-0106	0	11	3.5	DB16-0044
Left Cuspid	-7	9	3.5	DB16-0107	0	11	3.5	DB16-0045
Right Bicuspid	-7	0	3.0	DB16-0108	-7	0	3.0	DB16-0048
Left Bicuspid	-7	0	3.0	DB16-0109	-7	0	3.0	DB16-0049
Right Bicuspid w/ Hook	-7	0	3.0	DB16-0110	-7	0	3.0	DB16-0050
Left Bicuspid w/ Hook	-7	0	3.0	DB16-0111	-7	0	3.0	DB16-0051
Right Bicuspid & Offset	-7	0	3.0	DB16-0112	-7	0	3.0	DB16-0052
Left Bicuspid & Offset	-7	0	3.0	DB16-0113	-7	0	3.0	DB16-0053
Right Bicuspid w/ Hook & Offset	-7	0	3.0	DB16-0114	-7	0	3.0	DB16-0054
Left Bicuspid w/ Hook & Offset	-7	0	3.0	DB16-0115	-7	0	3.0	DB16-0055

### MANDIBULAR ARCH

	MBT*.022				Roth*.022			
	Torq°	Angle°	Width (mm)	Code	Torq°	Angle°	Width (mm)	Code
Anterior Right	-6	0	2.5	DB16-0120	0	0	2.5	DB16-0056
Anterior Left	-6	0	2.5	DB16-0121	0	0	2.5	DB16-0057
Right Cuspid	-6	3	3.0	DB16-0122	-11	5	3.0	DB16-0058
Left Cuspid	-6	3	3.0	DB16-0123	-11	5	3.0	DB16-0059
Right Cuspid w/ Hook	-6	3 3	.0	DB16-0124	-11	5	3.0	DB16-0060
Left Cuspid w/ Hook	-6	3	3.0	DB16-0125	-11	5	3.0	DB16-0061
Right 1st Bicuspid	-12	2	3.0	DB16-0126	-17	0	3.0	DB16-0062
Left 1st Bicuspid	-12	2 3	.0	DB16-0127	-17	0	3.0	DB16-0063
Right 1st Bicuspid w/ Hook	-12	2	3.0	DB16-0130	-17	0	3.0	DB16-0064
Left 1st Bicuspid w/ Hook	-12	2	3.0	DB16-0131	-17	0	3.0	DB16-0065
Right 2nd Bicuspid	-17	2	3.0	DB16-0128	-22	0	3.0	DB16-0066
Left 2nd Bicuspid	-17	2	3.0	DB16-0129	-22	0	3.0	DB16-0067
Right 2nd Bicuspid w/ Hook	-17	2	3.0	DB16-0132	-22	0	3.0	DB16-0068
Left 2nd Bicuspid w/ Hook	-17	2	3.0	DB16-0133	-22	0	3.0	DB16-0069
Right 1st Bicuspid & Offset	-12	2	3.0	DB16-0134	-17	0	3.0	DB16-0070
Left 1st Bicuspid & Offset	-12	2	3.0	DB16-0135	-17	0	3.0	DB16-0071
Right 1st Bicuspid w/ Hook & Offset	-12	2	3.0	DB16-0138	-17	0	3.0	DB16-0072
Left 1st Bicuspid w/ Hook & Offset	-12	2	3.0	DB16-0139	-17	0	3.0	DB16-0073
Right 2nd Bicuspid & Offset	-17	2	3.0	DB16-0136	-22	0	3.0	DB16-0074
Left 2nd Bicuspid & Offset	-17	2	3.0	DB16-0137	-22	0	3.0	DB16-0075
Right 2nd Bicuspid w/ Hook & Offset	-17	2	3.0	DB16-0140	-22	0	3.0	DB16-0076
Left 2nd Bicuspid w/ Hook & Offset	-17	2	3.0	DB16-0141	-22	0	3.0	DB16-0077

\*The prescriptions are not implied to be an exact version of any other system, nor do we claim any endorsement by the doctor(s).

Metalen brackets zijn verpakt per 10 stuks / Les brackets métalliques sont emballés par 10 pcs



# Evolve Bracket system

## Kits MBT\*/Roth\*

### Bracket Kits MBT

	Code
Evolve MBT .022 Hks 3, 4, 5	DB16-0260
Evolve MBT .022 Hks 3	DB16-0261
Evolve MBT .022 Hks 3, 4 & 5 offset	DB16-0262
Evolve MBT .022 No Hks	DB16-0263
Evolve MBT .018 Hks 3, 4, 5	DB16-0264
Evolve MBT .018 Hks 3	DB16-0265

### Bracket Kits Roth

	Code
Evolve Roth .022 Hks 3, 4, 5	DB16-0250
Evolve Roth .022 Hks 3	DB16-0251
Evolve Roth .018 Hks 3	DB16-0252
Evolve Roth .018 No Hks	DB16-0253
Evolve Roth .022 Hks 3, Offset 4 & 5	DB16-0254
Evolve Roth .018 Hks 3, 4, 5	DB16-0255

- NEW & IMPROVED**  
**Mushroom shaped hook**  
 Secures chains and attachments and prevents slipping in between patient appointments.
- Centre Scribe Line**  
 For accurate placement in line with the axis of the tooth.
- Rounded Tie Wings**  
 For patient comfort
- Bevelled Tie Wings**  
 To reduce visibility from the front without compromising on strength.
- Ultra Low Friction Slot**  
 CNC manufactured slot and advanced polishing process creates mirror finish by removing high surface peaks at molecular level.



\*The prescriptions are not implied to be an exact version of any other system, nor do we claim any endorsement by the doctor(s).



